

Wisconsin Lead Service Line Inventory Technical Assistance Program

WATER SERVICE LINE INVENTORY DEVELOPMENT AND IMPROVEMENT PLAN

Fox Lake Water Utility (City), PWSID: 11401456

September 23, 2024

Overview

Your water system must develop and maintain an inventory of all service line materials within your service area, as required under the U.S. Environmental Protection Agency's (EPA) Lead and Copper Rule Revisions (LCRR). Your initial service line inventory must be submitted to the Wisconsin Department of Natural Resources (DNR) by **October 16, 2024**.

As part of the DNR's service line inventory technical assistance program, Jacobs Engineering prepared an inventory of the service line materials at your water system to meet the initial LCRR inventory requirements. This plan summarizes the initial inventory development and offers guidance for your system to identify and track information on service line material during normal operations.

The following key topics are covered in this document, providing essential information and guidance for maintaining and submitting your initial inventory:

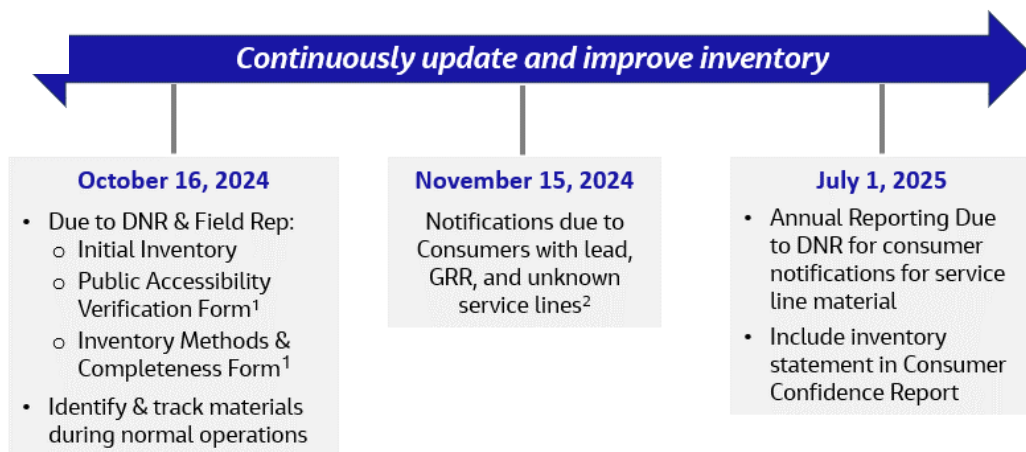
- Section 1. LCRR Background – Initial Inventory Requirements and Definitions
- Section 2. Initial Service Line Inventory for Your Water System
- Section 3. Identifying and Tracking Service Line Materials During Normal Operations
- Section 4. Next Steps for Compliance

Additionally, this plan includes the following attachments for your use:

- Attachment A – Your Water System's Initial Service Line Inventory
- Attachment B – Procedure for Visual Identification of Service Line Material
- Attachment C – Field Identification Form to Collect Service Line Material
- Attachment D – Map of Water System Services
- Attachment E – Addresses Requiring Consumer Notifications

There are additional actions your water system must take to comply with the initial LCRR inventory requirements, which are summarized in the graphic below and further detailed in **Section 4 Next Steps for Compliance**. More information on the DNR's inventory requirements is available here: <https://dnr.wisconsin.gov/topic/DrinkingWater/LSLInventoryRequirements.html>.

LCRR Regulatory Timeline for Initial Inventory



¹ Forms are available at <https://dnr.wisconsin.gov/topic/DrinkingWater/LSLInventoryRequirements.html>; Systems may submit information requested by these forms in a different format.

² Must notify new customers at the time-of-service initiation.

Section 1. LCRR Background - Initial Inventory Requirements and Definitions

The initial service line materials inventory (inventory) requirements under the LCRR are summarized below to assist your water system in understanding the new requirements (EPA, 2021; 2022; 2023a; 2024a; 2024b). The remaining sections in this plan will cover these requirements in more detail.

The DNR's Service Line Inventory Requirements for LCRR website contains relevant documents and forms that water systems are encouraged to reference for the most current requirements: <https://dnr.wisconsin.gov/topic/DrinkingWater/LSLInventoryRequirements.html>.

The inventory includes the entirety of the service line from the water main or a well to the building inlet/structure, for all service lines regardless of ownership status. The service line may be owned entirely by the water system or customer, or in some cases, ownership may be split between the water system and the customer. **Figure 1a** provides a visual representation for the typical service line ownership of a single-family home in a city or village and **Figure 1b** provides a visual representation for the typical service line ownership in a mobile home in a park. The ownership terms represented in the DNR materials inventory template can be defined as follows:

- **Street-Side:** The portion of the water service line that is typically owned by the water system, which usually includes the service line from the water main, or a well, to a curb stop or shut off valve.
- **Property-Side:** The portion of the water service line that is typically *not* owned by the water system, which usually includes the service line from a curb stop or shut off valve to the interior of the building or structure.

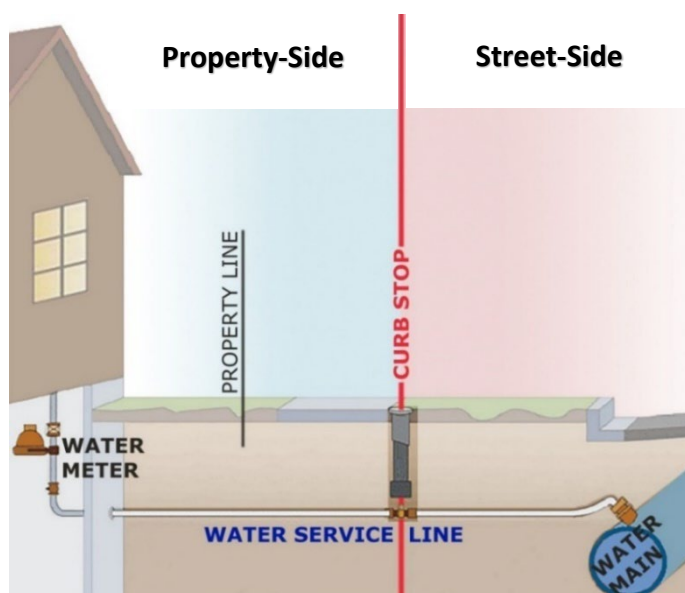


Figure 1a –Single Family Home Service Line Ownership Responsibilities. Source: <https://dnr.wisconsin.gov/aid/documents/EIF/LeadServiceLineFunding.html>

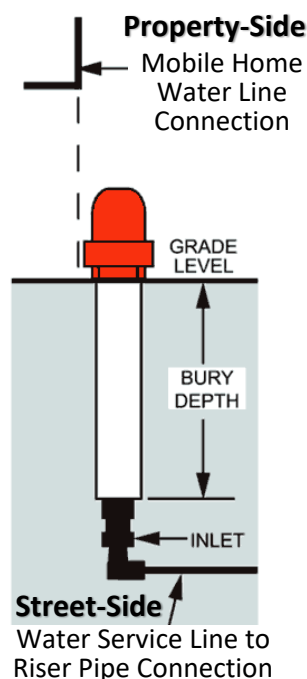


Figure 1b –Mobile Home Park Service Line Ownership

The inventory must include all service lines regardless of the actual or intended use of the service line. This includes:

- Non-potable service lines such as fire suppression or those designated for emergency.
- Service lines connected to vacant or abandoned lots or buildings, even if they are unoccupied and water service is turned off.
- Service lines connecting multiple units or buildings on a property.

1.1 Service Line Material Classification

Each service line, or portion of the service line where ownership is split, must be characterized as lead, galvanized requiring replacement (GRR), lead status unknown (unknown), or non-lead (or the actual material) as detailed in **Table 1**. In addition, a *single classification* for the entire service line is required when ownership is split as shown in **Table 2**.

Table 1. Service Line Material Classifications

Material	Description
Lead	Any portion of pipe that is made of lead, which connects the water main (or well) to the building inlet.
GRR	A galvanized service line that is or was at any time downstream of a lead service line; or is currently downstream of an unknown service line.
Non-lead	A service line that is determined through an evidence-based record, method, or technique not to be lead or GRR.
Unknown	A service line where the material is not known to be lead, GRR, or a non-lead service line, such as where there is no documented evidence supporting material classification.

Note: Lead goosenecks, pigtails, and connectors are not classified as a lead service line under the LCRR. However, forthcoming federal requirements may require water systems to track lead connectors in their inventories and systems are encouraged to track this information as available.

Table 2. Classifying Service Line Materials When Ownership Is Split

Street-Side Portion	Property-Side Portion	Classification for Entire Service Line
Lead	Lead	Lead
	GRR	
	Non-lead	
	Unknown	
Non-lead and never previously lead	Lead	Lead
	Non-lead, material other than galvanized	Non-lead
	Non-lead, specifically galvanized pipe material	
	Unknown	Unknown
Non-lead, but system is unable to demonstrate it was not previously Lead	GRR	GRR
Unknown	Lead	Lead
	GRR	GRR
	Non-lead	Unknown
	Unknown	

1.2 Information to Identify Service Line Material

To prepare the initial inventory, water systems are required to review all available record types and information sources that fall into the categories summarized in **Figure 2** (EPA, 2021). The specific data and records reviewed to create your water system's initial inventory are described in **Section 2 Initial Service Line Inventory**.

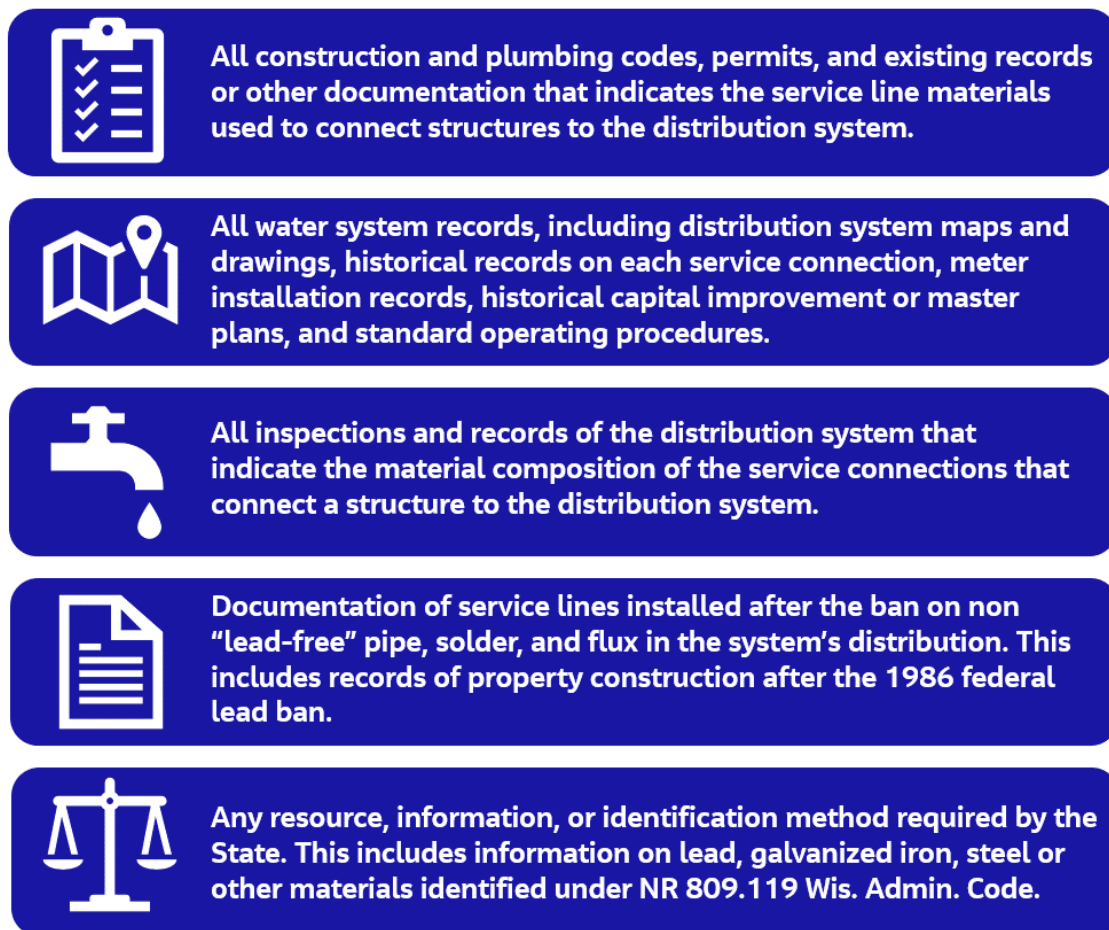


Figure 2 – LCRR Records Review Requirements for Initial Inventory.

Systems must also identify and track information on service line materials as they are encountered during normal operations, which is further detailed in **Section 3 Identifying Service Line Materials During Normal Operations**. In addition, there are other actions your water system must take to comply with the initial LCRR inventory requirements as outlined in **Section 4 Next Steps for Compliance**, including a detailed checklist (**Table 5**).

Section 2. Initial Service Line Inventory for Your Water System

As part of the DNR's service line inventory technical assistance program, Jacobs Engineering (Jacobs) prepared an initial LCRR inventory for your water system that is provided in **Attachment A**. Your inventory was prepared using the DNR's template and in accordance with federal and state-specific requirements (DNR, 2024; EPA, 2021). **Attachment D** provides a map identifying the locations of all the service lines inventoried for your water system. **Attachment E** provides a list of locations that require consumer notification that their water service is lead, galvanized requiring replacement, or lead status unknown.

Your initial inventory was developed based on reviewing historical records specified in the LCRR (outlined in **Figure 2** above) to determine service line materials using information available from your water system. Jacobs coordinated with your system, and performed a site visit, to collect the available information and records to create your initial inventory. The specific records and data reviewed to develop the initial inventory for your water system is summarized in **Table 3**.

Based on the initial inventory provided as part of this plan, **Table 4** summarizes the service line material classifications for your system as a preliminary overview of your inventory status. Each time you submit your inventory, the DNR will prepare a summary of your service line classifications for reporting to EPA.

It is important to note that your water system is responsible for reviewing the inventory for accuracy and completeness and submitting to the DNR by the October 16, 2024, deadline, as well as updating and maintaining the inventory.

You are also required to identify and track information on service line materials as they are encountered during normal operations as detailed in the following section. **Specific compliance actions your water system must address to comply with the initial LCRR inventory requirements are provided in *Section 4 Next Steps for Compliance*.**

Table 3. Summary of Water System Records Reviewed to Develop Your Initial Inventory

Record Title	Record Description
City Of Fox Lake 1992 Water Main Reconstruction	Construction Drawings or Records and System Maps
Fox Lake Water System Map	Construction Drawings or Records and System Maps
City Of Fox Lake Meter History Report - Summary February 2024	Installation, Maintenance or Replacement Permits or Records
Meter Installation and Maintenance Forms	Planning Documents or System Reports

Note: The information on this page should be used to complete the DNR's [LCRR Inventory Methods & Completeness Form](#) (See **Table 5**).

Table 4. Preliminary Summary of Service Line Material Classifications

<i>Service Line Material Classification</i>	<i>Street-side portion</i>	<i>Property-side portion</i>	<i>Classification for Entire Service Line</i>
Lead	0	0	0
Galvanized Requiring Replacement (GRR)	0	0	0
Lead Status Unknown	220	622	661
Non-lead	509	107	68
<i>Total Number of Service Connections: 729</i>			

Note: There are consumer notice requirements for service lines classified as lead, GRR, and unknown that are described in *Section 4 Next Steps for Compliance*.

Section 3. Identifying and Tracking Service Line Materials During Normal Operations

As part of the initial LCRR inventory requirements, water systems must identify and track information on service line material as they are encountered during the course of normal operations. You should treat the inventory as a living dataset that is continuously updated over time. Your water system can have service lines categorized as unknown in the initial inventory submission; however, the number of unknowns in the inventory should be reduced over time, as you gather new information through normal day-to-day operations and with any proactive material identification activities in which your water system is engaged.

It is strongly recommended that systems take action to reduce the number of unknowns in the inventory and begin tracking service line material as they are encountered during normal operations before the LCRR compliance date.

The graphic and information provided below presents strategies for all water system types to continuously update and validate your inventory during the course of routine day-to-day maintenance operations.

Routine Maintenance Activities Where Your System Could Collect Service Line Information

Inventory activities should be considered as something that can be worked into the day-to-day activities of your system rather than treated as an independent effort.

Opportunities for information collection include (if applicable):

- Water meter reading or repair
- Service line and/or water main repair or replacement
- Any maintenance inside or on properties
- Backflow prevention or cross connection control inspections
- Other system or capital improvement projects

Your system should consider developing a standard process now to document how your staff or contractors will collect and use field data to update your inventory.

3.1 Procedures for Collecting Service Line Material Information

Capturing information on service lines collected during normal operations will enable your system to continuously update and improve your inventory by identifying unknown materials for which no records were found and verifying the accuracy of records-based material classification. As additional data is collected, you should continue to track and update material type and the source of information used to classify each service line in your inventory spreadsheet (**Attachment A**) or database.

To assist your water system with implementing a process to identify and track service line materials during normal operations, the following documents are provided for your use:

Attachment B – Procedure for visual identification of service line material

This document provides guidance for visual identification of your service line materials that can be used when service lines are encountered during day-to-day operations and routine activities.

Attachment C – Field Identification Form to collect service line material

- **This can be used as a template to gather and track relevant service line inventory information for your water system.**
- **The form is intended to record all inspection and verification information when service line materials are accessible and exposed during normal day-to-day investigation or verification activities.**
- **For accuracy and best practice, you can attach photographs to this form whenever possible as a visual record of the field inspection.**

Attachment D – Map of Water System Services

- **Water systems should further prioritize the oldest unknown material services first and work their way to newer unknown service lines**
- **Utilize available records such as well construction reports, city/county/state construction permits, occupancy permits, contractor invoices or similar documents to identify the year of water service line installation and materials.**

3.2 Additional Ways to Identify Unknown Service Line Materials

In addition to identifying and tracking service line information during normal operations, water systems are encouraged to consider performing service line investigations to further reduce the number of unknowns. The unknowns for your water system were summarized in **Table 4** above for reference.

There are several investigation methods and strategies for prioritizing service line investigations that your system can proactively implement to reduce the number of unknowns. Examples are described below that your system can consider. Additional information is available in EPA's inventory guidance (EPA, 2022; 2023a). Note that DNR approval may be required, and water systems are encouraged to contact DNR before implementation of additional methods.

- **Prioritize service line investigations** based on:
 - Service line materials identified as '*unknown- may contain lead or galvanized*' (installed before the federal lead ban in 1986). See **Attachment D** for a map that identifies the service lines that fall into this category.
 - Vulnerable or environmental justice populations; and
 - Occupied buildings (rather than unoccupied structures).
- **Select investigation methods**, including:
 - Visual identification of service line material by resident,
 - Mechanical or vacuum excavation, and
 - Water quality sampling.

Section 4. Next Steps for Compliance

You must submit your initial inventory to the DNR and your field representative by **October 16, 2024**, and address the additional requirements outlined below. Jacobs will not submit your inventory for you. If you find new service line information after the Jacobs site visit, you are encouraged to update your inventory to maintain its accuracy. You can make updates directly in your inventory spreadsheet (**Attachment A**) and submit your updated inventory directly to the DNR through email by the October 16, 2024, deadline.

In addition to submitting your inventory by October 16, 2024, you must also do both of the following:

- Make your inventory publicly accessible and provide verification to the DNR that your inventory has been made publicly accessible by filling out, signing and emailing the [Public Accessibility Verification Form](#) to DNRDGLeadCopperInventories@wisconsin.gov, and copying your DNR field representative.
- Fill out, sign and email the [Inventory Methods and Completeness Verification](#) form to DNRDGLeadCopperInventories@wisconsin.gov, and copy your DNR field representative.
- By November 15, 2024, send consumer notices to all consumers with lead, GRR, or unknown service line materials (**Attachment E**).

Submit your Initial Inventory and forms to DNR by email to DNRDGLeadCopperInventories@wisconsin.gov and your field representative by **October 16, 2024.**

Jacobs will NOT submit your inventory for you.

For more information on the DNR's inventory requirements, visit:
<https://dnr.wisconsin.gov/topic/DrinkingWater/LSLInventoryRequirements.html>

For additional questions, contact the DNR by email at:
DNRDGLeadCopperInventories@wisconsin.gov

Table 5 below is a compliance checklist outlining the initial LCRR inventory requirements that your water system must complete and their associated deadlines. It is intended to assist your system with addressing the necessary compliance requirements.

In addition, the EPA is in the process of promulgating another federal rule, referred to as the Lead and Copper Rule Improvements (LCRI). While the LCRI is not expected to change the initial inventory requirements, there may be more stringent inventory requirements to be aware of in the future (EPA, 2023b).

Table 5. Checklist of LCRR Requirements for Initial Inventory (Adapted from EPA, 2024a and DNR, 2024).

Due Date	Requirement	Description and Resources
October 16, 2024	<input type="checkbox"/> Initial Inventory	<ul style="list-style-type: none"> Submit to mail to: dnrdleadcopperinventories@wisconsin.gov and copy your DNR field rep. Initial inventory in DNR template provided in Attachment A. Make sure to review for accuracy before submission.
	<input type="checkbox"/> Inventory Available to Public	<ul style="list-style-type: none"> Make your inventory publicly accessible as detailed in DNR's Public Accessibility Verification Form referenced below. Examples of a publicly accessible inventory can include, but are not limited to: Displaying at a community center or water system office; Providing upon request through email, mail, etc.; Include notice in water bill; Post on website
	<input type="checkbox"/> Public Accessibility Verification Form ^a	<ul style="list-style-type: none"> Complete public accessibility verification and inventory methods and completeness forms and submit via email with the Initial Inventory. Refer to Table 3 for summary of records reviewed for your water system to assist with the methods and completeness form. Both forms are available on DNR's website: https://dnr.wisconsin.gov/topic/DrinkingWater/LSLInventoryRequirements.html
	<input type="checkbox"/> Inventory Methods & Completeness Form ^a	
	<input type="checkbox"/> Identify & track materials during normal operations ^b	
November 15, 2024	<input type="checkbox"/> Initial Consumer Service Line Notice ^c	<ul style="list-style-type: none"> Provide written notice to consumers with lead, GRR, or unknown service line material within 30 days of submitting the initial inventory (Attachment E). EPA has provided templates that you can use to notify consumers of their service line material, which are accessible online: www.epa.gov/dwreginfo/lead-and-copper-rule-implementation-tools (EPA, 2024b).
Annually, beginning July 1, 2025	<input type="checkbox"/> Consumer Service Line Notice Delivery	Demonstrate that you delivered the consumer notifications and provide a copy of the notification and information materials to the DNR annually for the previous calendar year. Submit verification to dnrdleadcopperinventories@wisconsin.gov and copy your DNR field rep.
	<input type="checkbox"/> Consumer Confidence Report	Include a statement that the inventory has been prepared and provide instructions on how the public can access it.
Annually	<input type="checkbox"/> Updated Inventory	Submit updated inventories to the DNR until all lead and GRR service lines have been removed and all unknowns are confirmed to be non-lead.
	<input type="checkbox"/> Consumer Service Line Notice ^c	Provide written notice to consumers with lead, GRR, or unknown service line materials.

^a Systems may submit information requested in these forms in a different format.

^b Systems are encouraged to begin tracking service line material information as soon as possible.

^c Notices must also be provided to new customers at the time-of-service initiation.

References

- U.S. Environmental Protection Agency (EPA). 2021. National Primary Drinking Water Regulation: Lead and Copper Rule Revisions. 86 Fed. Reg. 4198.
<https://www.federalregister.gov/documents/2021/01/15/2020-28691/national-primary-drinking-water-regulations-lead-and-copper-rule-revisions>.
- U.S. Environmental Protection Agency. 2022. Guidance for Developing and Maintaining a Service Line Inventory. Retrieved from https://www.epa.gov/system/files/documents/2022-08/Inventory%20Guidance_August%202022_508%20compliant.pdf
- U.S. Environmental Protection Agency. 2023a. Developing and Maintaining a Service Line Inventory: Small Entity Compliance Guide. Retrieved from https://www.epa.gov/system/files/documents/2023-06/Final%20Small%20System%20Entity%20Inventory%20Guide_508.pdf
- U.S. Environmental Protection Agency. 2023b. National Primary Drinking Water Regulations for Lead and Copper: Improvements (LCRI). 88 FR 84878. (December 6, 2023) Federal Register <https://www.federalregister.gov/documents/2023/12/06/2023-26148/national-primary-drinking-water-regulations-for-lead-and-copper-improvements-lcri>
- U.S. Environmental Protection Agency. 2024a. LCRR Implementation Fact Sheet. Retrieved from https://www.epa.gov/system/files/documents/2024-04/revised-508_lcrr-compliance-fact-sheet_4.17.24.pdf
- U.S. Environmental Protection Agency. 2024b. LCRR Frequently Asked Questions (FAQs). Retrieved from https://www.epa.gov/system/files/documents/2024-04/lead-and-copper-rule-revisions-frequently-asked-questions_4102024_508.pdf
- Wisconsin Department of Natural Resources (DNR). 2024. Service Line Inventory Requirements for LCRR. Retrieved from <https://dnr.wisconsin.gov/topic/DrinkingWater/LSLInventoryRequirements.html>

Attachment A – Your Water System's Initial Service Line Inventory

Please refer to the spreadsheet file attached in the Jacobs email transmittal of your inventory.

Attachment B – Procedure for Visual Identification of Service Line Material

Lead Service Lines and Drinking Water Best Management Practices

LEAD IN WATER: WHAT YOU SHOULD KNOW

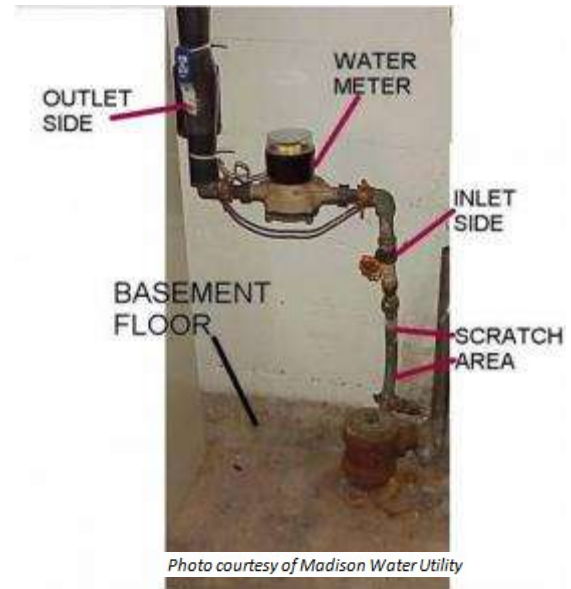
The amount of lead in water will vary based on the plumbing in a building, how much water is used, and how often it is used. Homes and business buildings built before 1951 were likely constructed with service lines made of lead, which connect the building plumbing to water mains under the street. Lead can also be found in interior plumbing pipes, solder and some plumbing fixtures.

IDENTIFYING A LEAD SERVICE PIPE

Tools needed: flathead screwdriver, refrigerator magnet

Lead pipes are dull gray in color and are soft enough to be easily scratched with a house key. A magnet will not stick to a lead pipe. A licensed plumber can determine if your service line and/or plumbing are made of lead and can replace them for you at your cost.

- Locate the water service pipe coming into the building (usually in the basement). An "inlet valve" and the water meter are installed on the pipe after the point of entry.
- Identify a test area on the pipe between the point where it comes into the building and the inlet valve.
- If the pipe is covered or wrapped, expose a small area of metal.
- Use the flat edge of a screwdriver or other tool to scratch through any corrosion that might have built up on the outside of the pipe.



Lead Pipe

If the scratched area is shiny and silver, your service line is lead. A magnet will not stick to a lead pipe.



Photo courtesy of Madison Water Utility

Copper Pipe

If the scratched area is copper in color, like a penny, your service line is copper. A magnet will not stick to copper pipe.



Photo courtesy of Madison Water Utility

Lead Service Lines and Drinking Water Best Management Practices

Galvanized Steel Pipe

If the scratched area remains a dull gray, and a magnet will stick to the surface, your service line is galvanized steel.



Photo courtesy of Madison Water Utility

STEPS TO REDUCE THE RISK OF LEAD IN YOUR DRINKING WATER

Lead can also be found in interior pipes and some plumbing fixtures. If you don't know whether your tap water contains lead, you should have the water tested by a certified lab. Proper sampling is required to obtain a valid result. (Note: A single test for lead level in drinking water may not be representative of the level at all times or of the average level over time.)

You can visit the DNR's website for a list of certified laboratories and to get lead sampling procedure information at: dnr.wi.gov/topic/drinkingwater/lead.html.

If your lead water service is lead, was lead and has recently been replaced or if there are other sources of lead in your internal plumbing and fixtures, following are steps you can take to reduce your exposure. Infants, small children under the age of six and women who are pregnant or breastfeeding are at special risk.

1. **Flush your plumbing.** Before using tap water for drinking, cooking, or preparing infant formula, flush your plumbing by running the cold water three minutes or longer until the water is noticeably cold. This process replaces water in the house plumbing and service line with water from the water main. Do this if the water has been standing unused in your pipes for more than six hours, such as overnight or during the work day. It is safe to shower, wash laundry and flush the toilet if you have a lead service line. These activities help flush the pipes. After any water utility work or household plumbing work, it is also important that you flush your household plumbing. Physical disturbance of the lead service line or lead piping by activities such as water main replacement, service line leaks, home plumbing repair, water meter replacement or main breaks may release lead into the water.
2. **Only drink and cook with cold water from the cold water tap.** Never drink or cook with water directly from the hot water tap. Hot water can dissolve lead from pipes and other substances that build up in the water heater. Boiling does not remove lead but can actually increase its concentration. Households with children under the age of six, or women who are pregnant or breastfeeding, should consider using bottled water or filtered tap water for formula, concentrated juices, cooking and drinking.
3. **Remove the screen and aerator from faucets, rinse out any debris, and re-attach.** Do this once a month. This will reduce the possibility that small particles that may contain lead could build up at your faucet.

Lead Service Lines and Drinking Water Best Management Practices

Other steps to consider:

- Purchase a home filtration system. Home drinking water filtration systems or pour-through filters can reduce or eliminate lead. Look for products certified by NSF/ANSI under Standard 53 for removal of lead and follow manufacturer's guidelines on installation and maintenance.
- Replace your lead service line or interior plumbing. A licensed plumber can help you assess the cost and feasibility of replacing your lead service line or interior plumbing. If you decide to do this, please call your local water utility for more information.
- Have your water tested for lead. Please consult the WDNR's website for accredited laboratories at: dnr.wi.gov/topic/labCert/certified-lab-lists.
- All children should be screened for lead poisoning, particularly if they live in a home built before 1978 with recent or ongoing renovation or if they have a sibling or playmate who has lead poisoning.

Attachment C – Field Identification Form to Collect Service Line Material

SERVICE LINE INVENTORY Field Identification Form

This form is a suggested tool to collect all identification information when service line materials are accessible and exposed during normal day-to-day operations. The field identification form, if used, should be treated as an official record for each service line. Required fields to complete during the field identification are shown in **BOLD** text and the remaining fields are optional fields to continue improving your inventory. For accuracy and best practices, whenever possible, you can attach photographs to this form as a visual record of the field identification. For steps to visually identify the material, you may refer to this link:

<https://dnr.wisconsin.gov/sites/default/files/topic/DrinkingWater/LeadServiceLineBMPs.pdf>

GENERAL INFORMATION (REQUIRED)

GENERAL INFORMATION (OPTIONAL)

Water System Name

Site ID

Identification Date

Account No.

Address of Service Line

Photo Confirmation Taken? ☐ Yes ☐ No

Name of Person Completing the Form

STREET-SIDE SERVICE LINE MATERIAL INFORMATION (REQUIRED)

Was this portion of the service line visually identified? ☐ Yes ☐ No

☐ Lead

☐ Copper

☐ Galvanized

☐ Plastic

☐ Unknown – may contain lead or galvanized

☐ Ductile Iron

☐ Unknown – does not contain lead or galvanized

☐ Cast Iron

☐ Other: *Specify* _____

STREET-SIDE SERVICE LINE MATERIAL INFORMATION (OPTIONAL)

Diameter (inches):

Lead Connector currently present? ☐ Yes ☐ No ☐ Not Known

PROPERTY-SIDE SERVICE LINE MATERIAL INFORMATION (REQUIRED)

Was this portion of the service line visually identified? ☐ Yes ☐ No

☐ Lead

☐ Copper

☐ Galvanized

☐ Plastic

☐ Unknown – may contain lead or galvanized

☐ Ductile Iron

☐ Unknown – does not contain lead or galvanized

☐ Cast Iron

☐ Other: *Specify* _____

PROPERTY-SIDE SERVICE LINE MATERIAL INFORMATION (OPTIONAL)

Diameter (inches):

Lead Connector currently present? ☐ Yes ☐ No ☐ Not Known**METHOD OF SERVICE LINE VERIFICATION (REQUIRED)**

- | | |
|---|--|
| <input type="checkbox"/> Visual inspection at the meter | <input type="checkbox"/> Mechanical or hydro-vacuum excavation |
| <input type="checkbox"/> Visual inspection during install or repair | <input type="checkbox"/> Cross-connection survey |
| <input type="checkbox"/> Other: <i>Specify</i> _____ | |

BUILDING TYPE (OPTIONAL)

- | | |
|--|--|
| <input type="checkbox"/> Single-Family Residential | <input type="checkbox"/> School or Childcare |
| <input type="checkbox"/> Multi-Family Residential | <input type="checkbox"/> Residential & In-Home Childcare |
| <input type="checkbox"/> Non-Residential | <input type="checkbox"/> Mixed Residential and Non-Residential |
| <input type="checkbox"/> Other: <i>Specify</i> _____ | |

BUILDING PLUMBING MATERIAL (OPTIONAL)

- | | |
|--|--|
| <input type="checkbox"/> Copper with lead solder | <input type="checkbox"/> Unknown |
| <input type="checkbox"/> Copper, no lead solder | <input type="checkbox"/> Not Accessible |
| <input type="checkbox"/> Galvanized | <input type="checkbox"/> Other: <i>Specify</i> _____ |

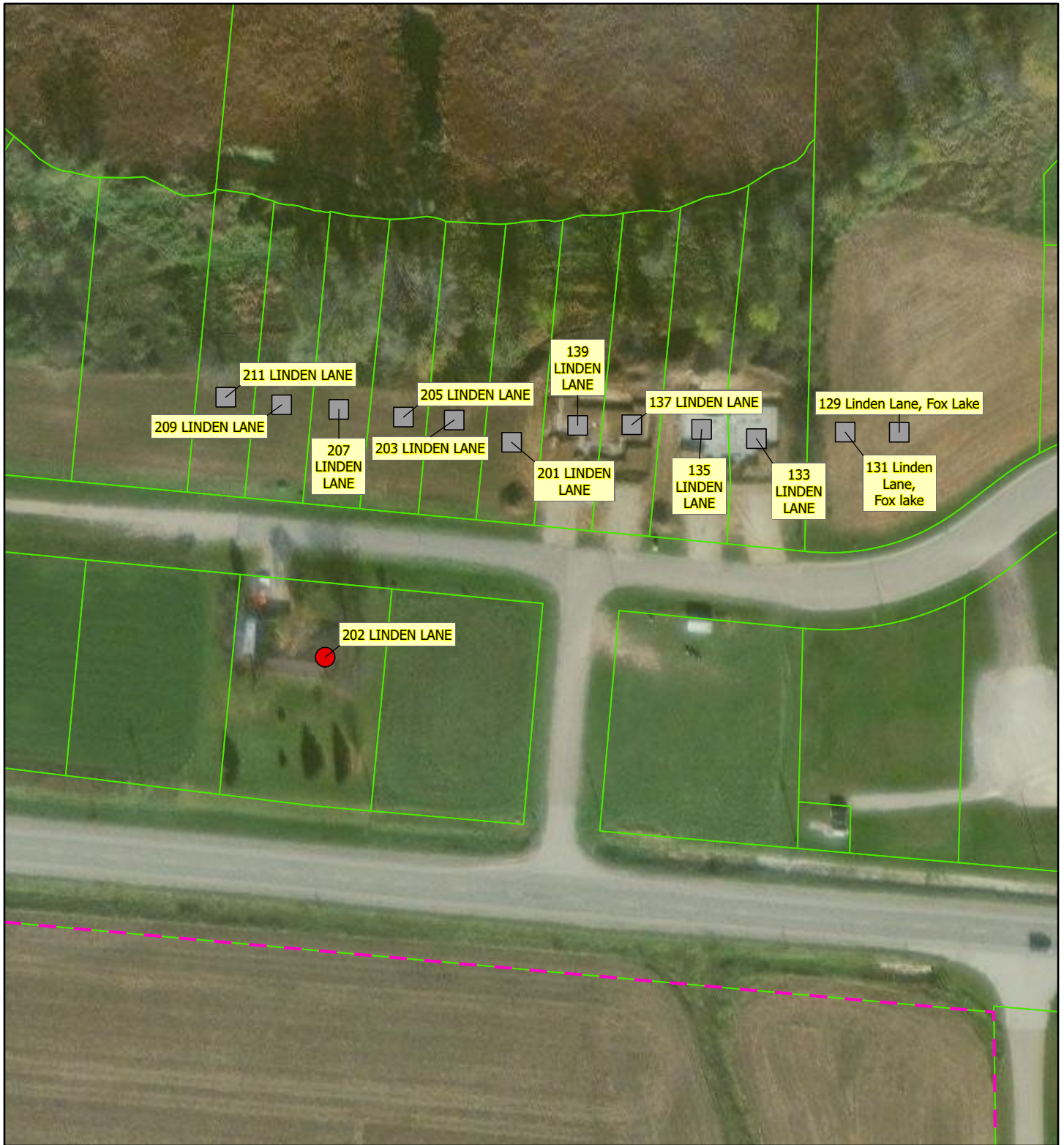
COMPLETE ONLY IF REPLACING THE STREET-SIDE SERVICE LINE (OPTIONAL)

Previous street-side service line material?

- | | |
|--|---------------------------------------|
| <input type="checkbox"/> Lead | <input type="checkbox"/> Copper |
| <input type="checkbox"/> Galvanized | <input type="checkbox"/> Plastic |
| <input type="checkbox"/> Unknown – may contain lead or galvanized | <input type="checkbox"/> Ductile Iron |
| <input type="checkbox"/> Unknown – does not contain lead or galvanized | <input type="checkbox"/> Cast Iron |
| <input type="checkbox"/> Other: <i>Specify</i> _____ | |

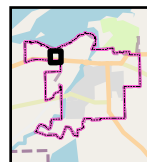
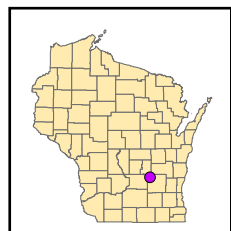
Was a Lead Connector present? ☐ Yes ☐ No ☐ Not Known

Attachment D – Map of Water System Services



Legend

- Unknown Service Line Material, May Contain Lead or Galvanized
- Service Line
- Wisconsin Parcels (2023)
- Water System Boundary



0 80 160 ft.



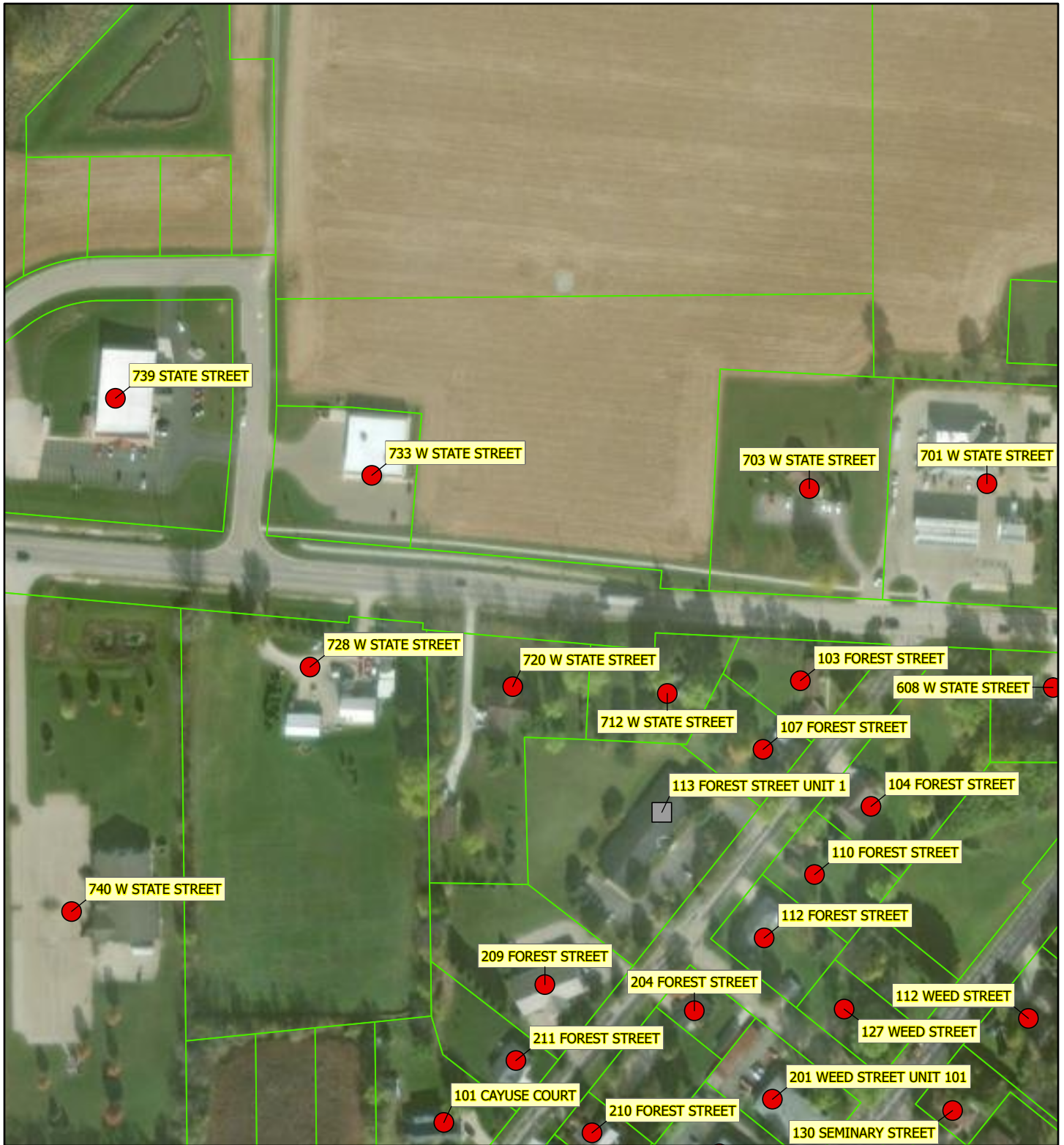
Fox Lake Water Utility (City) (PWSID 11401456):

Initial Lead Service Line Inventory 2024

Service Lines where the street or property side material is unknown, and may contain lead

SCR Region

1/19



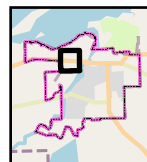
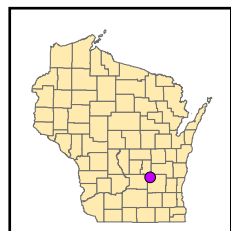
Legend

● Unknown Service Line Material,
May Contain Lead or Galvanized

■ Service Line

□ Wisconsin Parcels (2023)

□ Water System Boundary



0 140 280 ft.



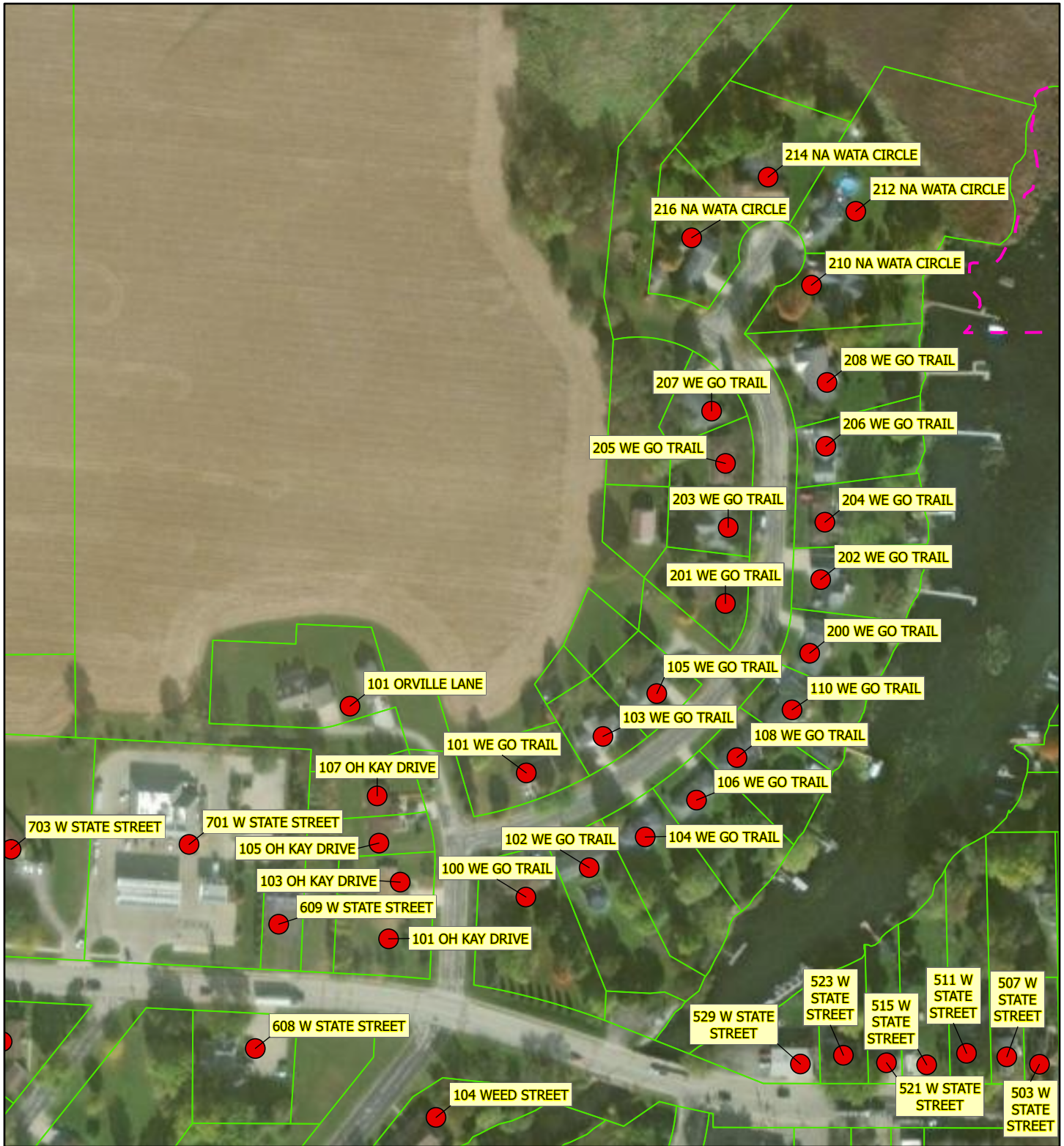
Fox Lake Water Utility (City)
(PWSID 11401456):

Initial Lead Service Line Inventory 2024

Service Lines where the street or property side material
is unknown, and may contain lead

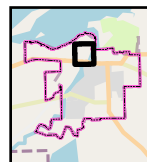
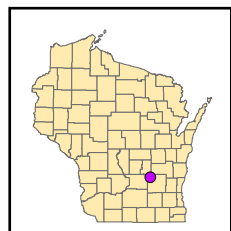
SCR Region

2/19



Legend

- Unknown Service Line Material, May Contain Lead or Galvanized
- Wisconsin Parcels (2023)
- Water System Boundary



0 140 280 ft.



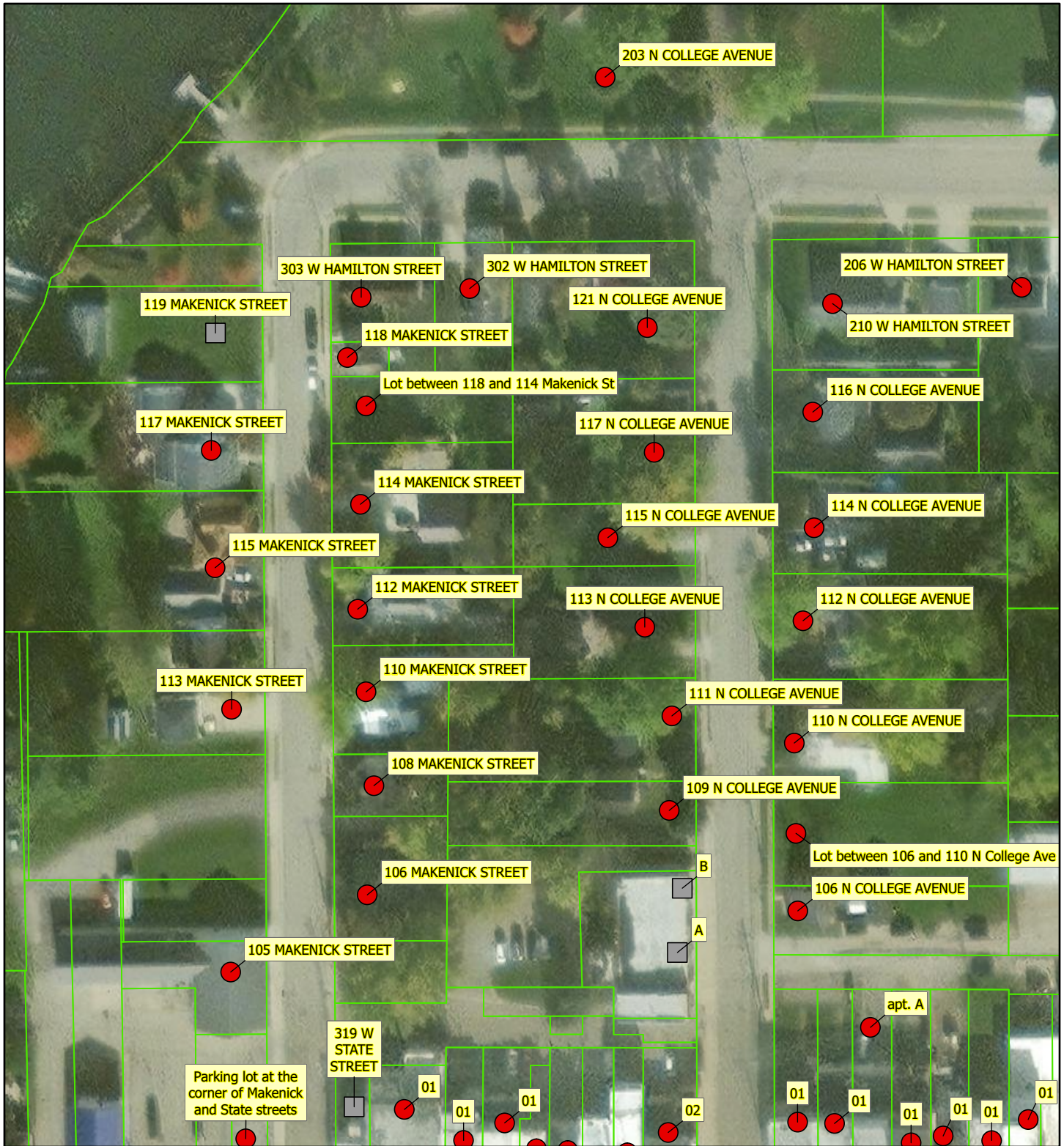
**Fox Lake Water Utility (City)
(PWSID 11401456):**

Initial Lead Service Line Inventory 2024

Service Lines where the street or property side material is unknown, and may contain lead

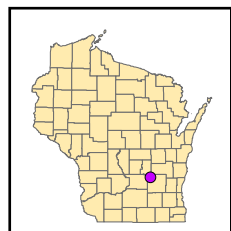
SCR Region

3/19



Legend

- Unknown Service Line Material, May Contain Lead or Galvanized
- Service Line
- Wisconsin Parcels (2023)
- Water System Boundary



0 60 120 ft.



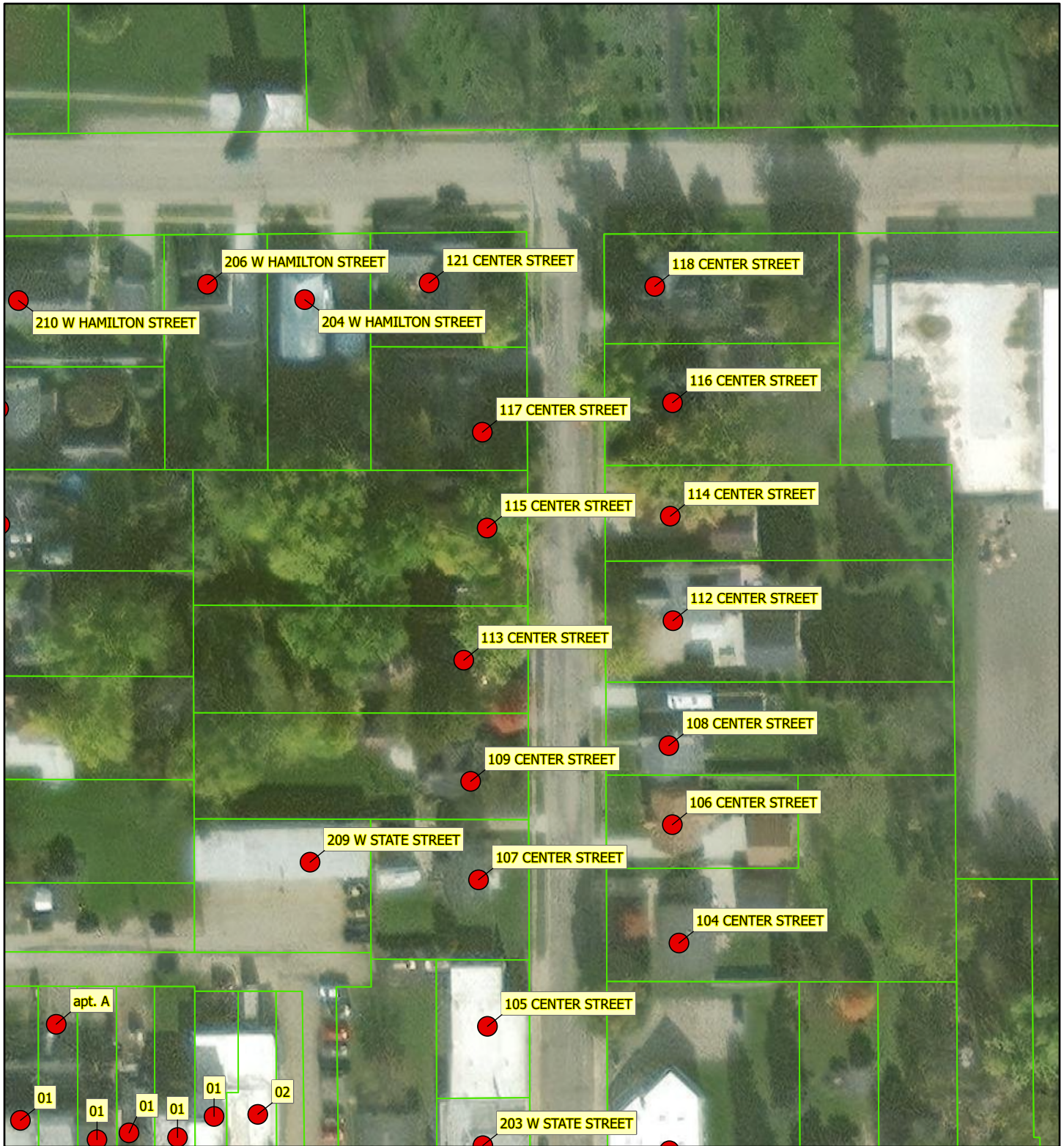
Fox Lake Water Utility (City)
(PWSID 11401456):

Initial Lead Service Line Inventory 2024

Service Lines where the street or property side material is unknown, and may contain lead

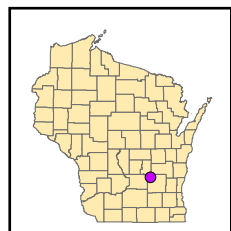
SCR Region

4/19



Legend

- Unknown Service Line Material, May Contain Lead or Galvanized
- Wisconsin Parcels (2023)
- Water System Boundary

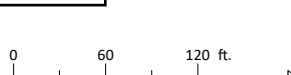


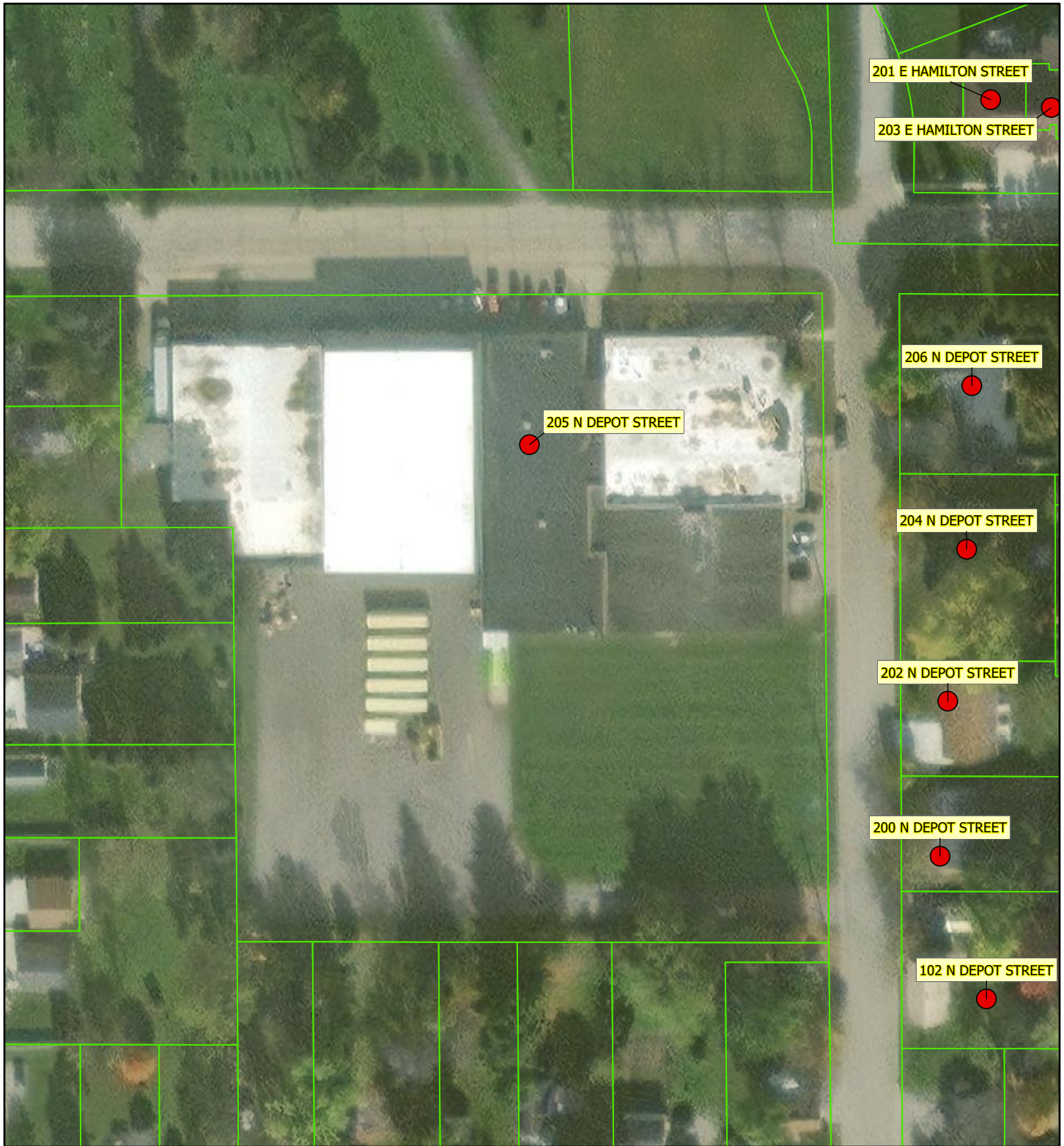
Fox Lake Water Utility (City)
(PWSID 11401456):

Initial Lead Service Line Inventory 2024

Service Lines where the street or property side material is unknown, and may contain lead

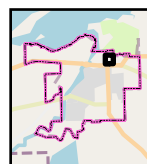
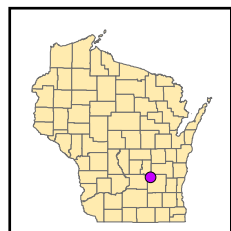
SCR Region
 5/19





Legend

- Unknown Service Line Material, May Contain Lead or Galvanized
- Wisconsin Parcels (2023)
- Water System Boundary



0 60 120 ft.



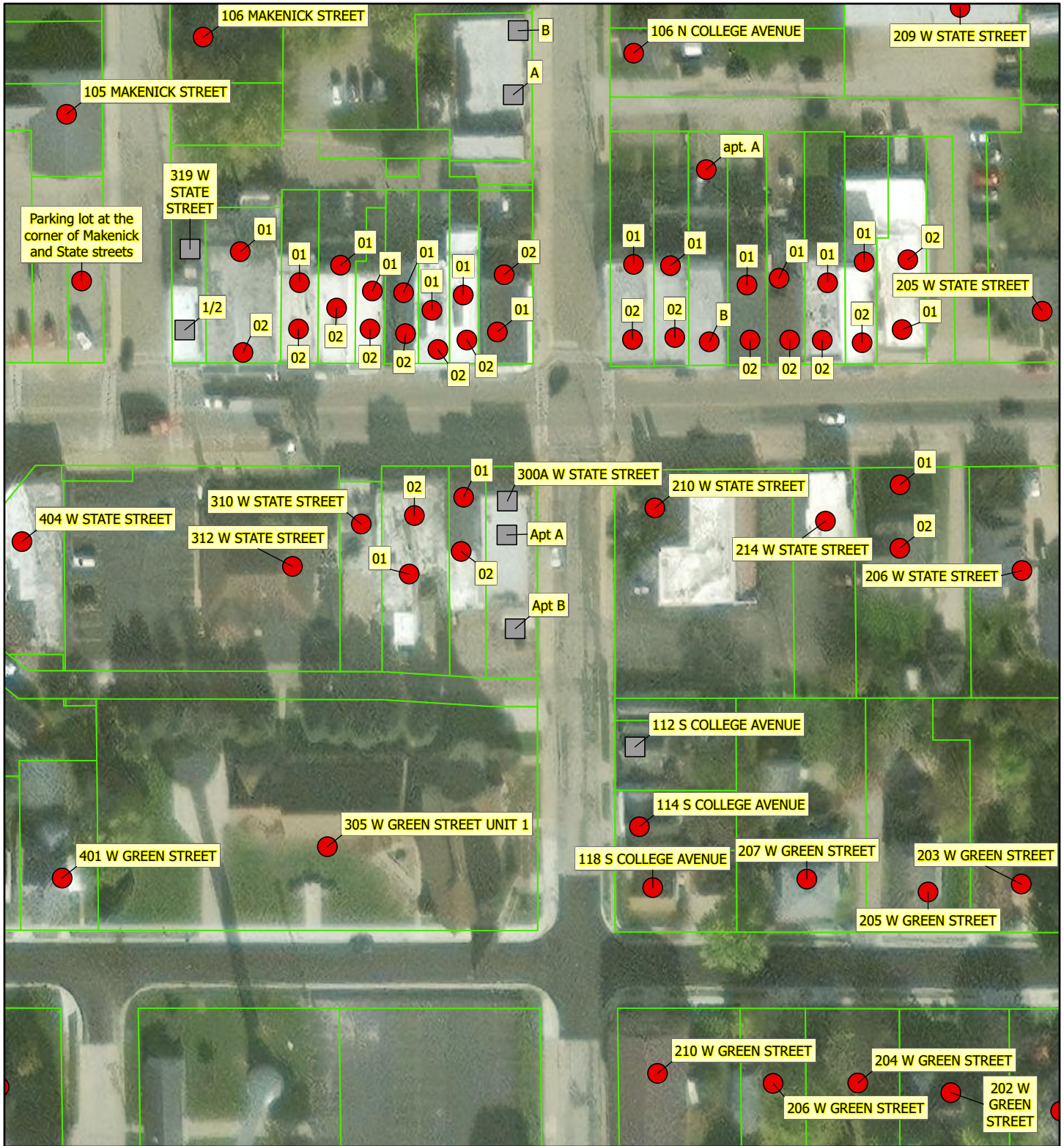
Fox Lake Water Utility (City)
(PWSID 11401456):

Initial Lead Service Line Inventory 2024





Service Lines where the street or property side material is unknown, and may contain lead

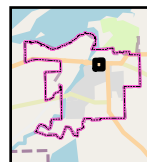
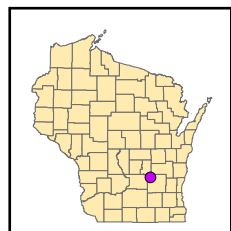
SCR Region

6/19



Legend

-  Unknown Service Line Material, May Contain Lead or Galvanized
-  Service Line
-  Wisconsin Parcels (2023)
-  Water System Boundary



0 60 120 ft.

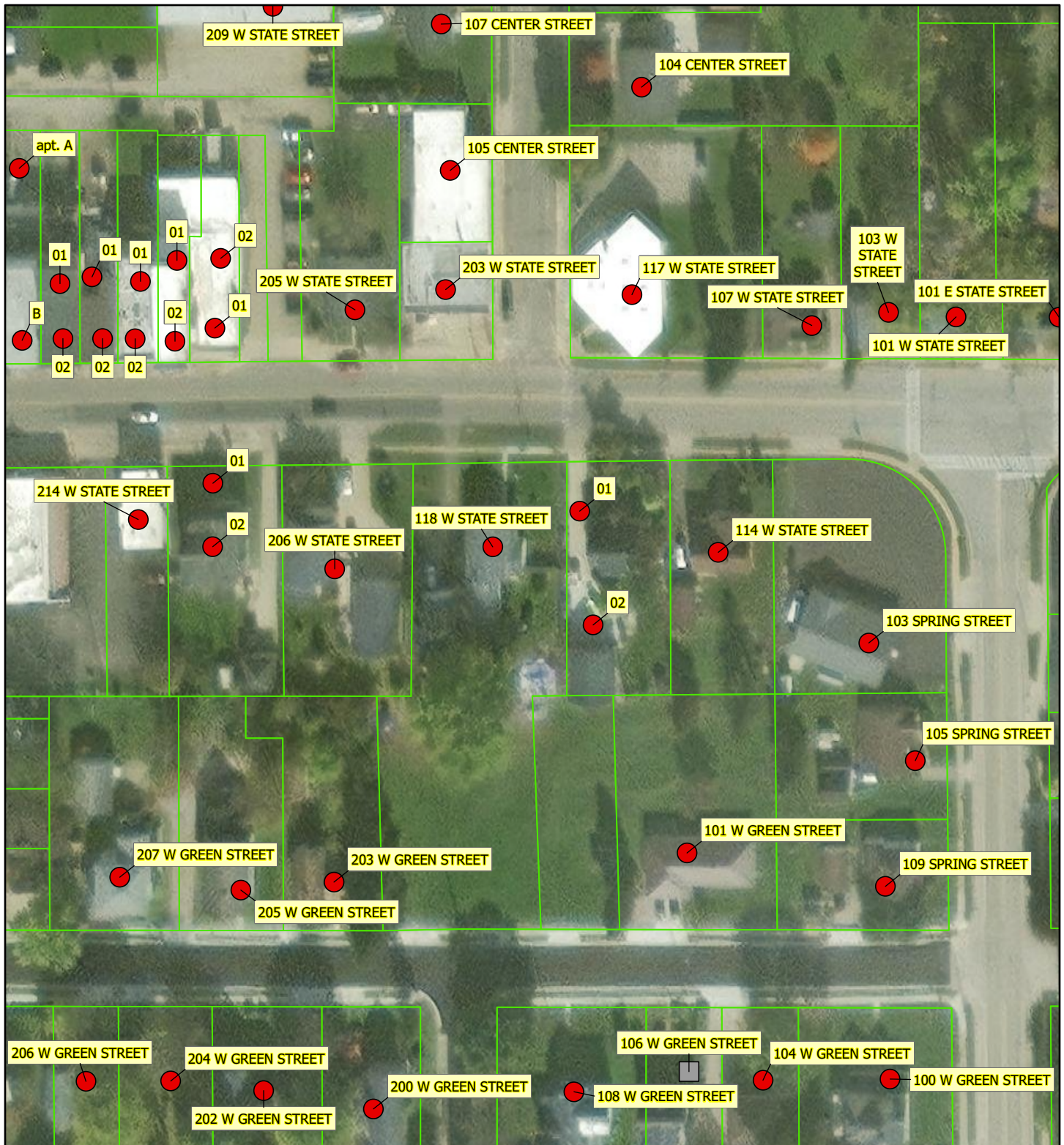


Fox Lake Water Utility (City)
(PWSID 11401456):

Initial Lead Service Line Inventory 2024

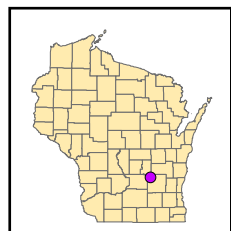
Service Lines where the street or property side material is unknown, and may contain lead

SCR Region
7/19



Legend

- Unknown Service Line Material, May Contain Lead or Galvanized
- Service Line
- Wisconsin Parcels (2023)
- Water System Boundary



0 60 120 ft.



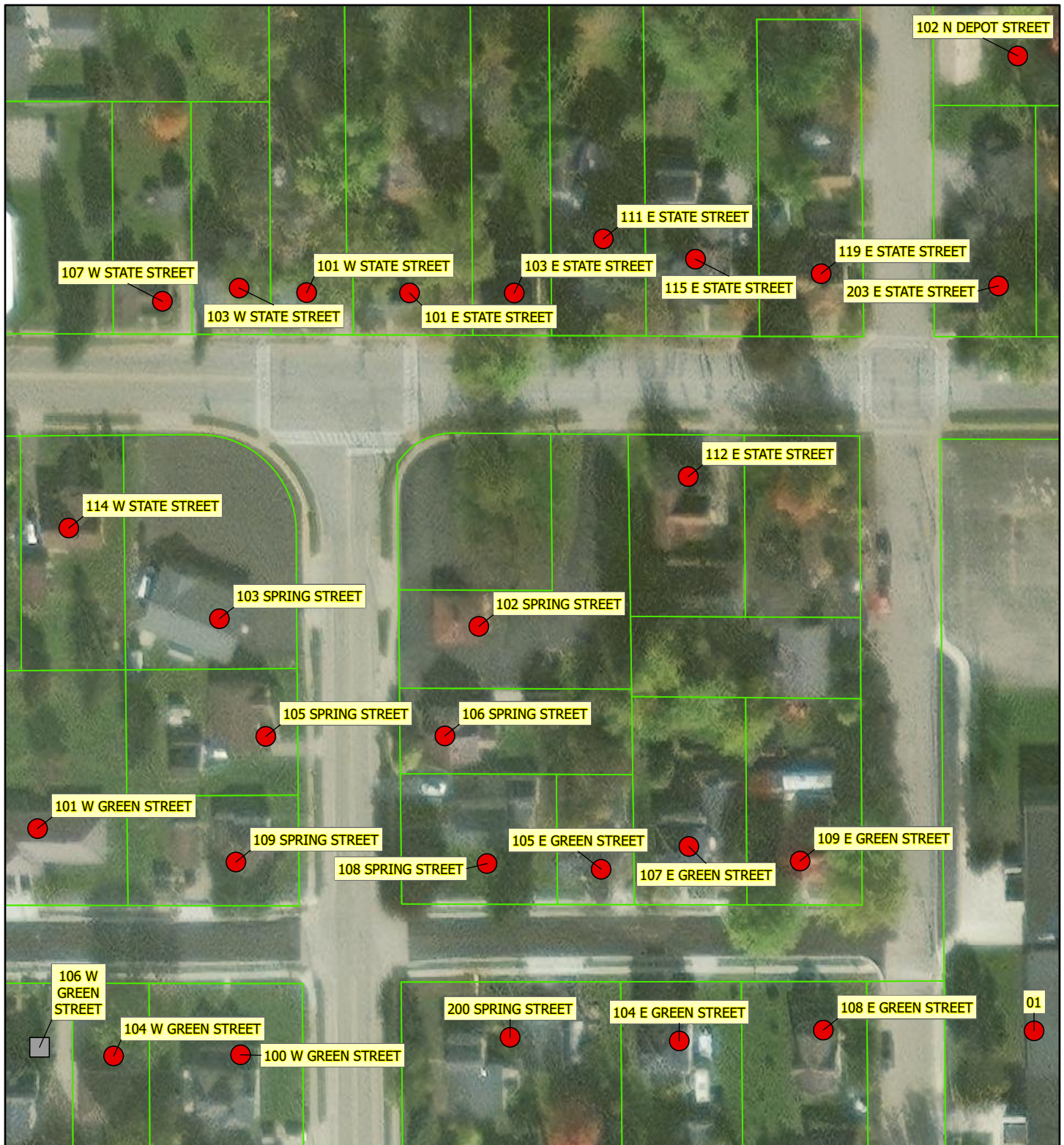
Fox Lake Water Utility (City)
(PWSID 11401456):

Initial Lead Service Line Inventory 2024

Service Lines where the street or property side material is unknown, and may contain lead

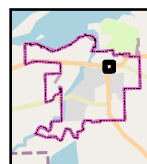
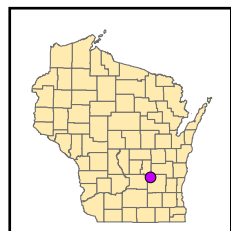
SCR Region

8/19



Legend

- Unknown Service Line Material, May Contain Lead or Galvanized
- Service Line
- Wisconsin Parcels (2023)
- Water System Boundary



0 60 120 ft.

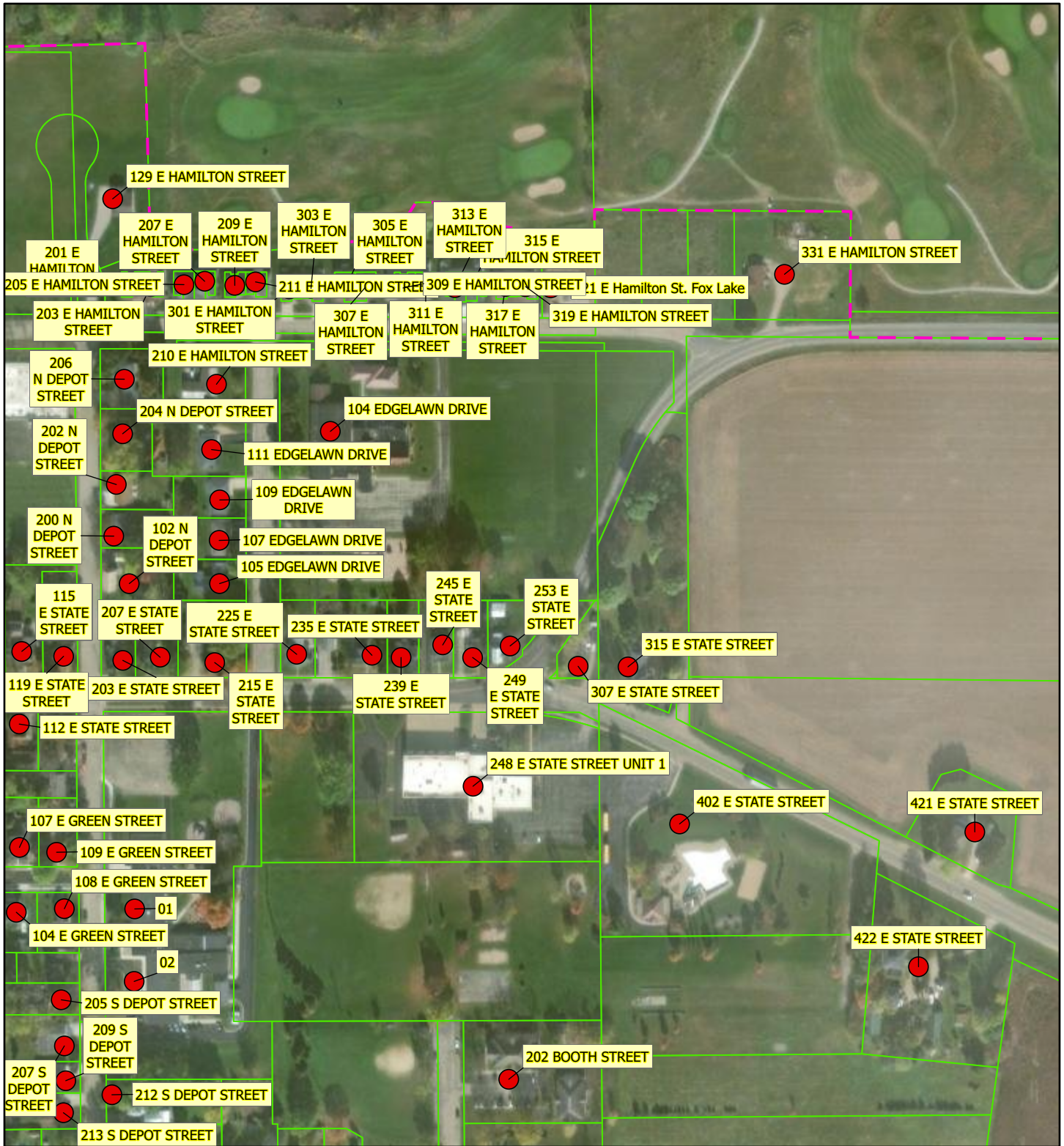


Fox Lake Water Utility (City)
(PWSID 11401456):

Initial Lead Service Line Inventory 2024

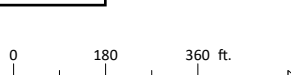
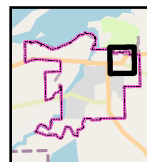
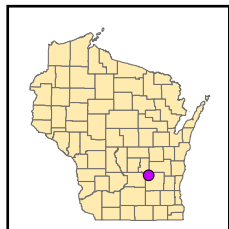
Service Lines where the street or property side material is unknown, and may contain lead

SCR Region
9/19



Legend

- Unknown Service Line Material, May Contain Lead or Galvanized
- Wisconsin Parcels (2023)
- Water System Boundary



**Fox Lake Water Utility (City)
(PWSID 11401456):**

Initial Lead Service Line Inventory 2024

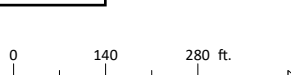
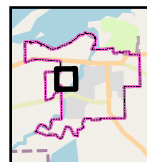
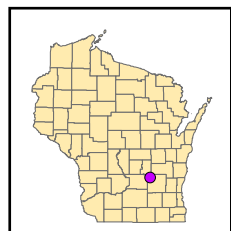
Service Lines where the street or property side material is unknown, and may contain lead

SCR Region
10/19



Legend

- Unknown Service Line Material, May Contain Lead or Galvanized
- Wisconsin Parcels (2023)
- Water System Boundary



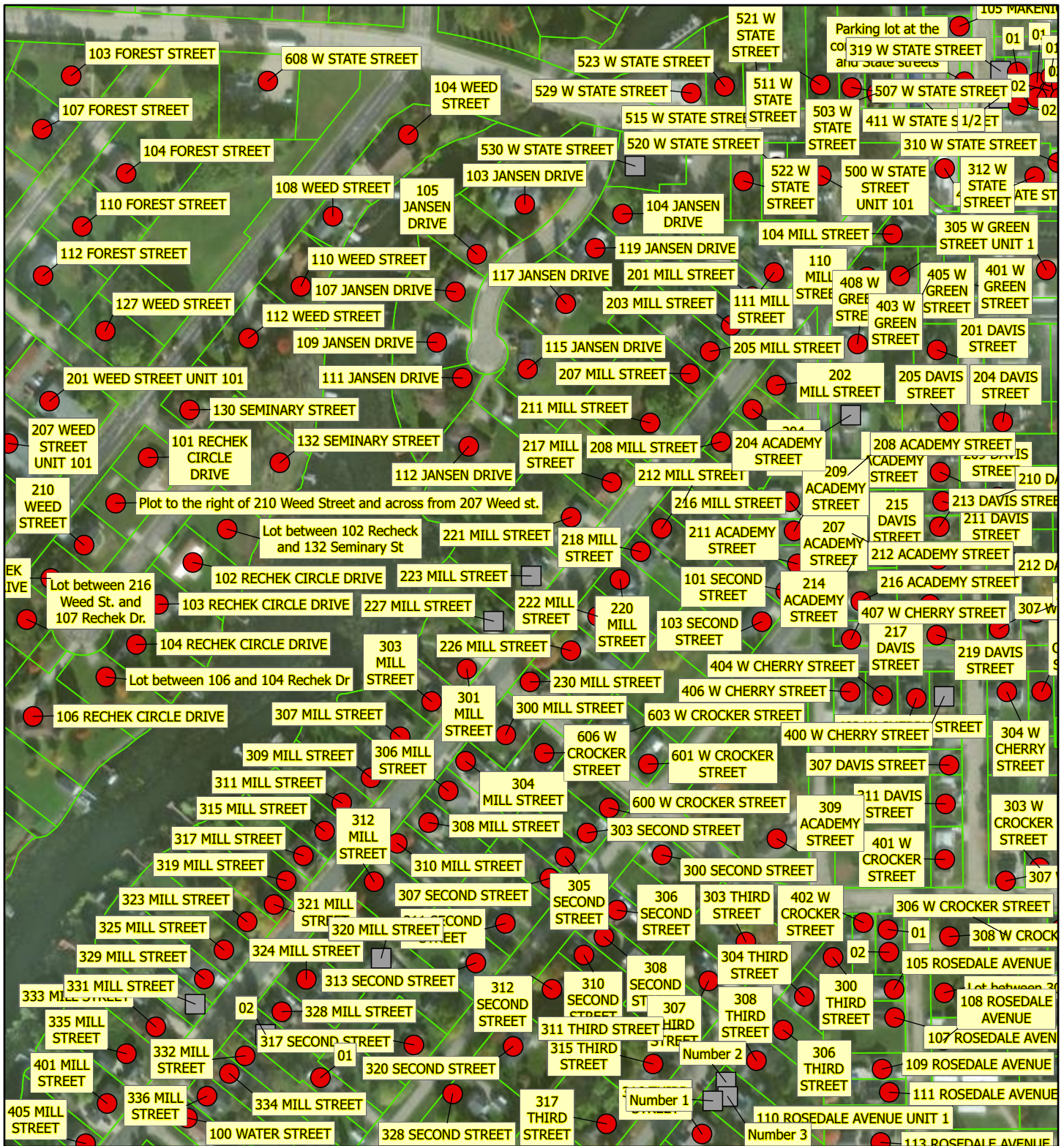
**Fox Lake Water Utility (City)
(PWSID 11401456):**

Initial Lead Service Line Inventory 2024

Service Lines where the street or property side material is unknown, and may contain lead

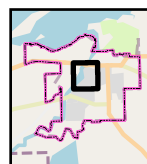
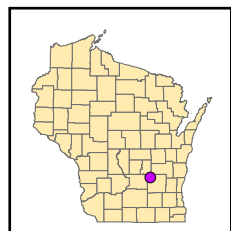
SCR Region

11/19



Legend

- Unknown Service Line Material, May Contain Lead or Galvanized
- Service Line
- Wisconsin Parcels (2023)
- - - Water System Boundary



0 180 360 ft.



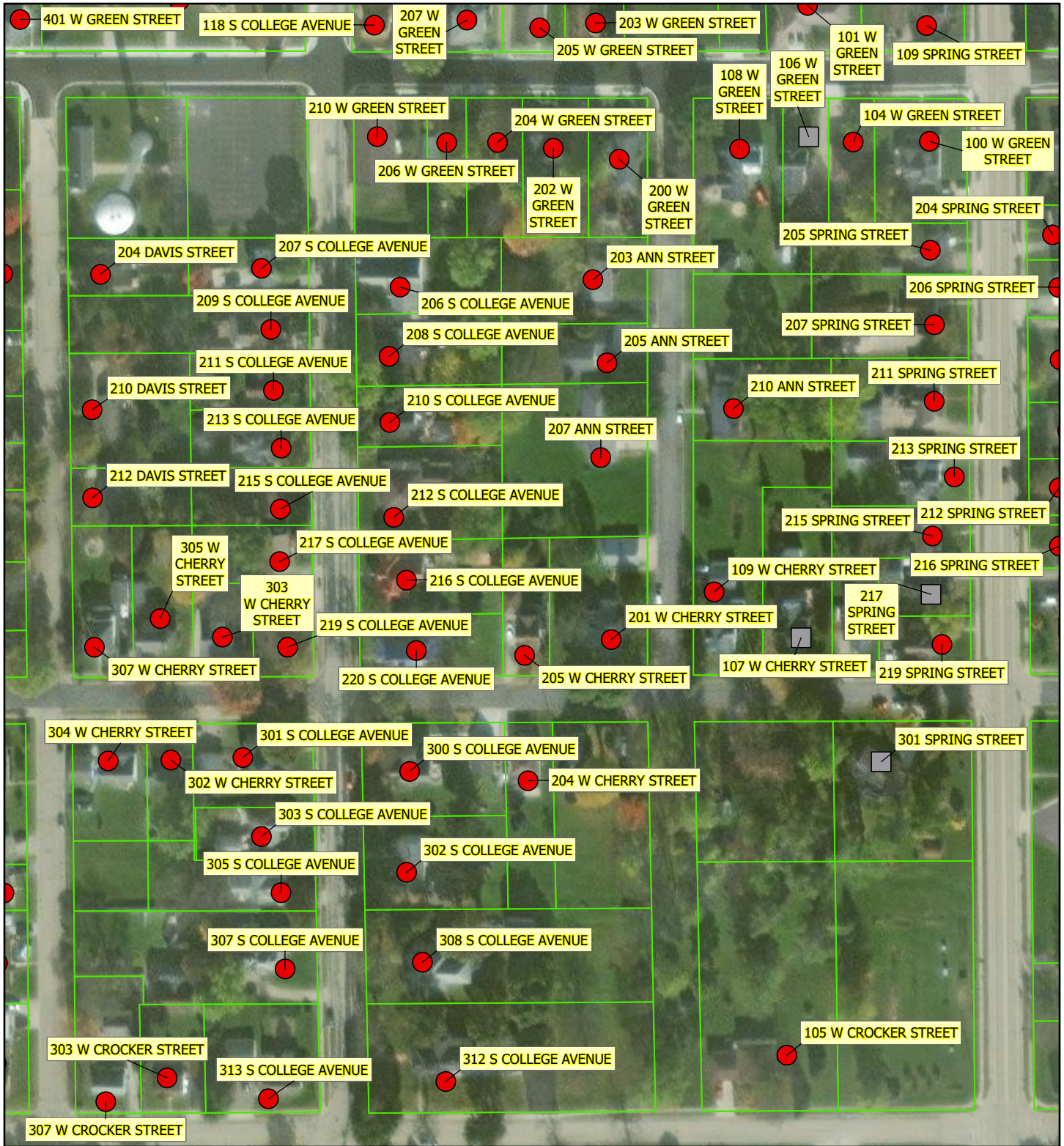
Fox Lake Water Utility (City) (PWSID 11401456):

Initial Lead Service Line Inventory 2024

Service Lines where the street or property side material is unknown, and may contain lead

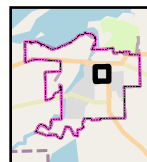
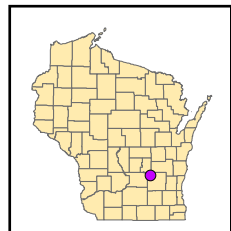
SCR Region

12/19



Legend

- Unknown Service Line Material, May Contain Lead or Galvanized
- Service Line
- Wisconsin Parcels (2023)
- Water System Boundary



0 100 200 ft.



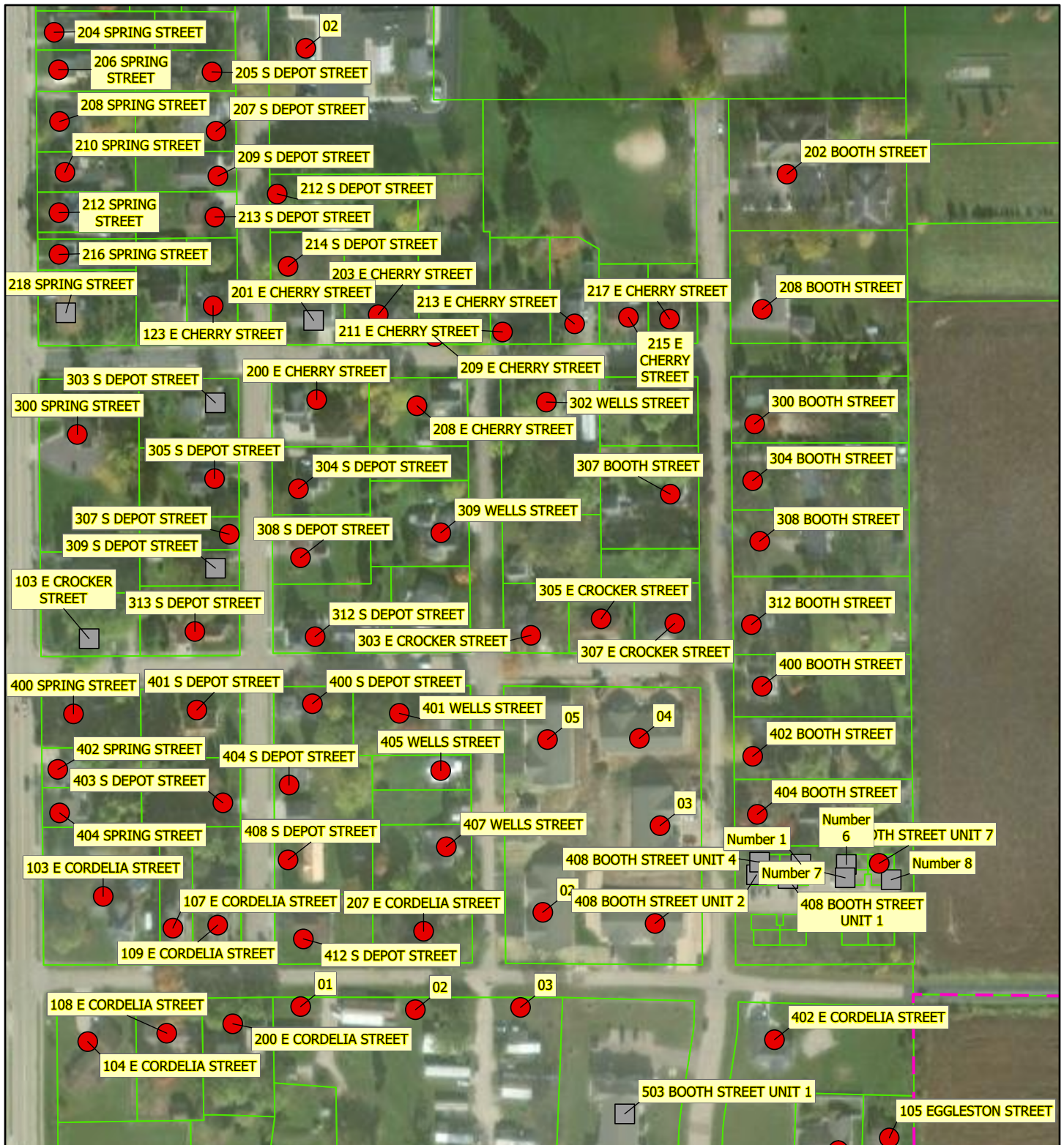
Fox Lake Water Utility (City) (PWSID 11401456):

Initial Lead Service Line Inventory 2024

Service Lines where the street or property side material is unknown, and may contain lead

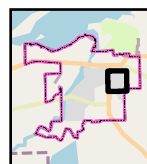
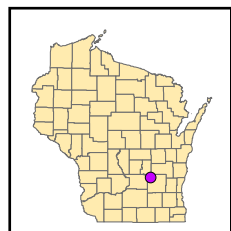
SCR Region

13/19



Legend

- Unknown Service Line Material, May Contain Lead or Galvanized
- Service Line
- Wisconsin Parcels (2023)
- Water System Boundary



0 140 280 ft.



Fox Lake Water Utility (City)
(PWSID 11401456):

Initial Lead Service Line Inventory 2024

Service Lines where the street or property side material is unknown, and may contain lead

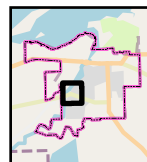
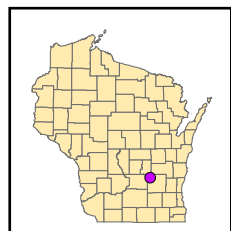
SCR Region

14/19



Legend

- Unknown Service Line Material, May Contain Lead or Galvanized
- Service Line
- Wisconsin Parcels (2023)
- - - Water System Boundary



0 140 280 ft.

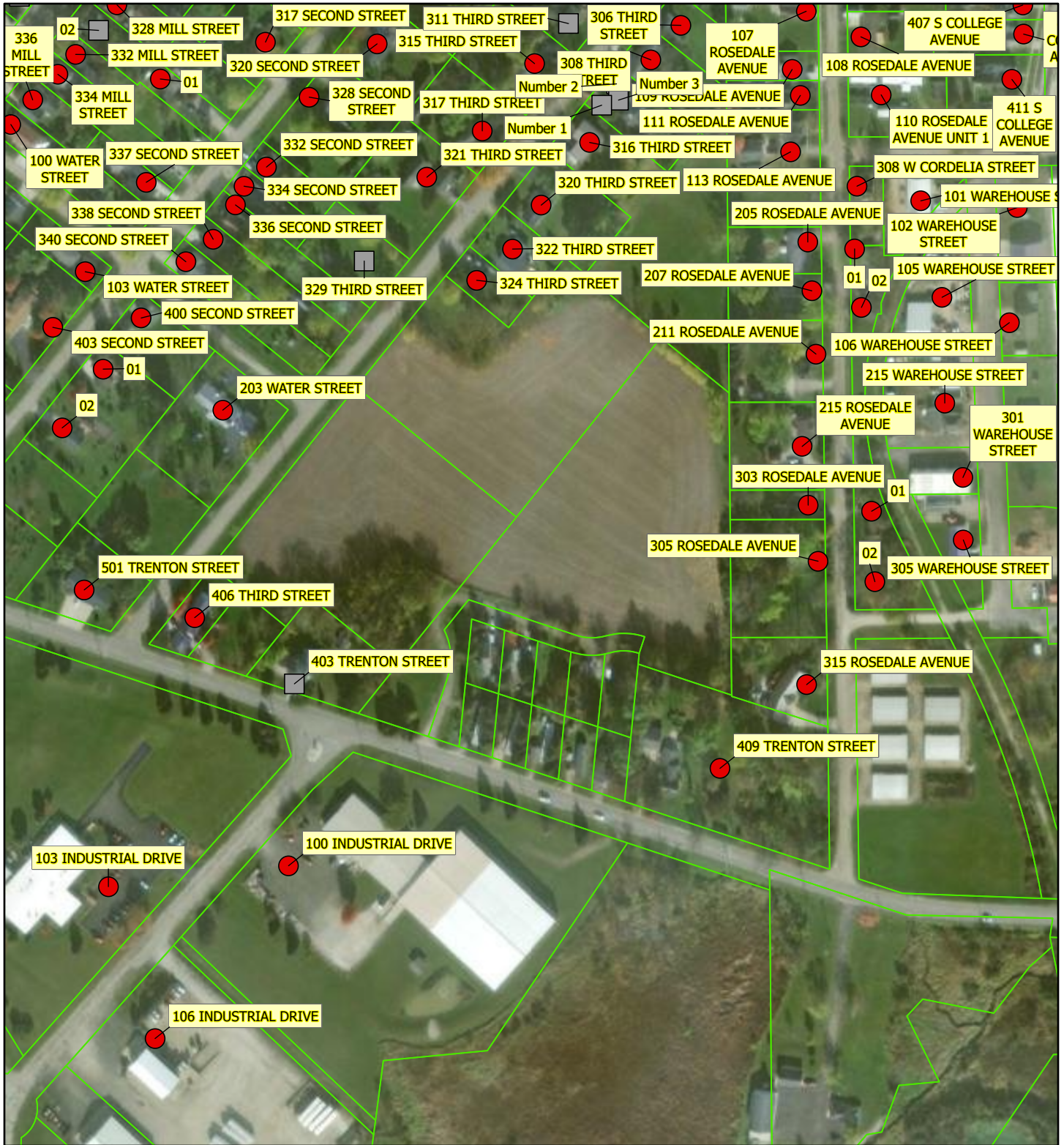


Fox Lake Water Utility (City) (PWSID 11401456):

Initial Lead Service Line Inventory 2024

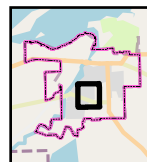
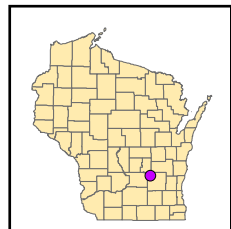
Service Lines where the street or property side material is unknown, and may contain lead

SCR Region
15/19



Legend

- Unknown Service Line Material, May Contain Lead or Galvanized
- Service Line
- Wisconsin Parcels (2023)
- Water System Boundary



0 160 320 ft.

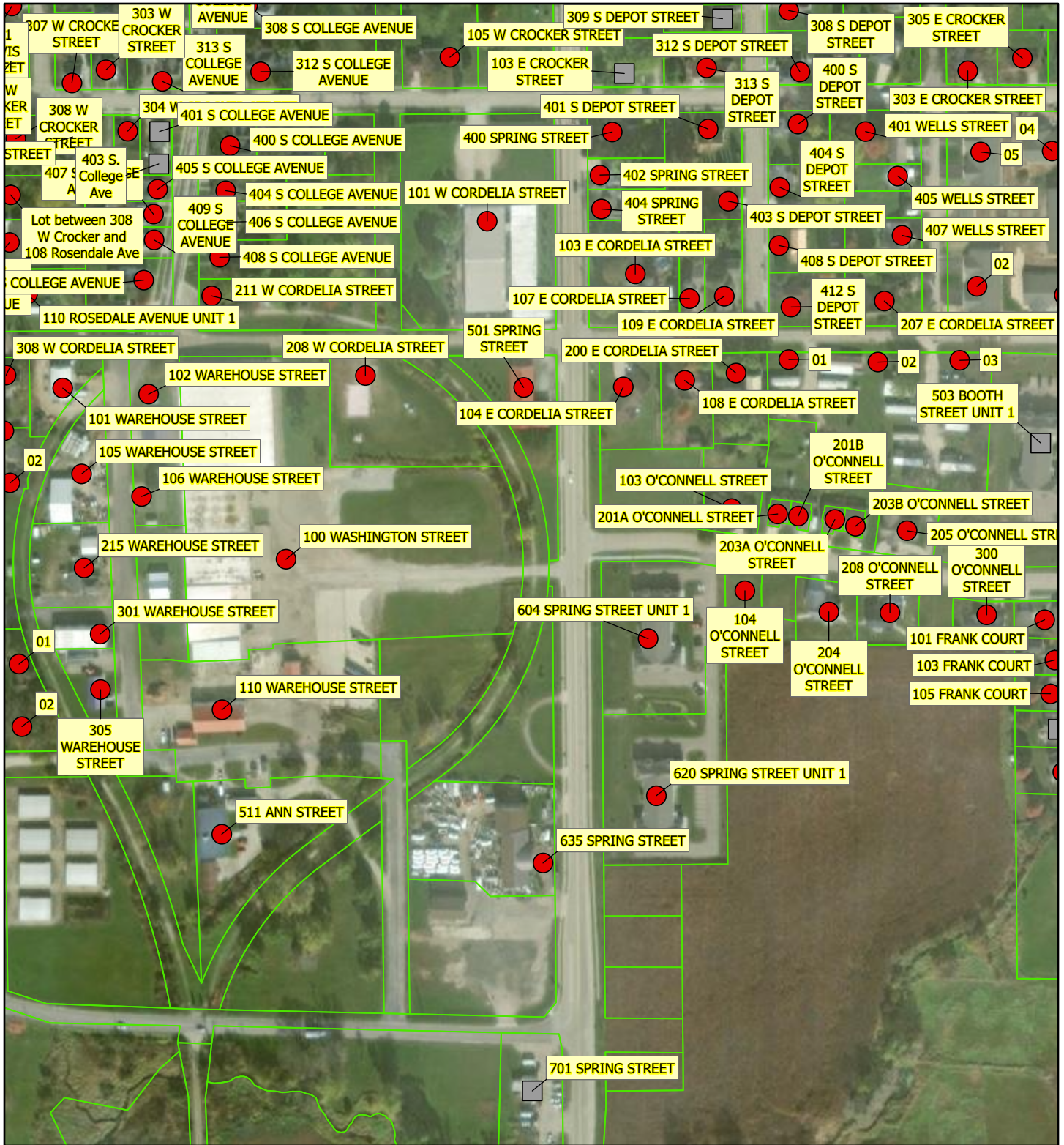


Fox Lake Water Utility (City) (PWSID 11401456):

Initial Lead Service Line Inventory 2024

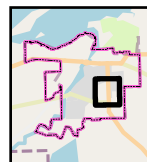
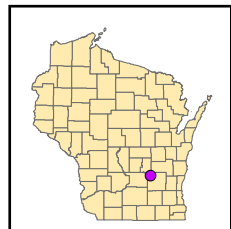
Service Lines where the street or property side material is unknown, and may contain lead

SCR Region
16/19



Legend

- Unknown Service Line Material, May Contain Lead or Galvanized
- Service Line
- Wisconsin Parcels (2023)
- Water System Boundary



0 180 360 ft.

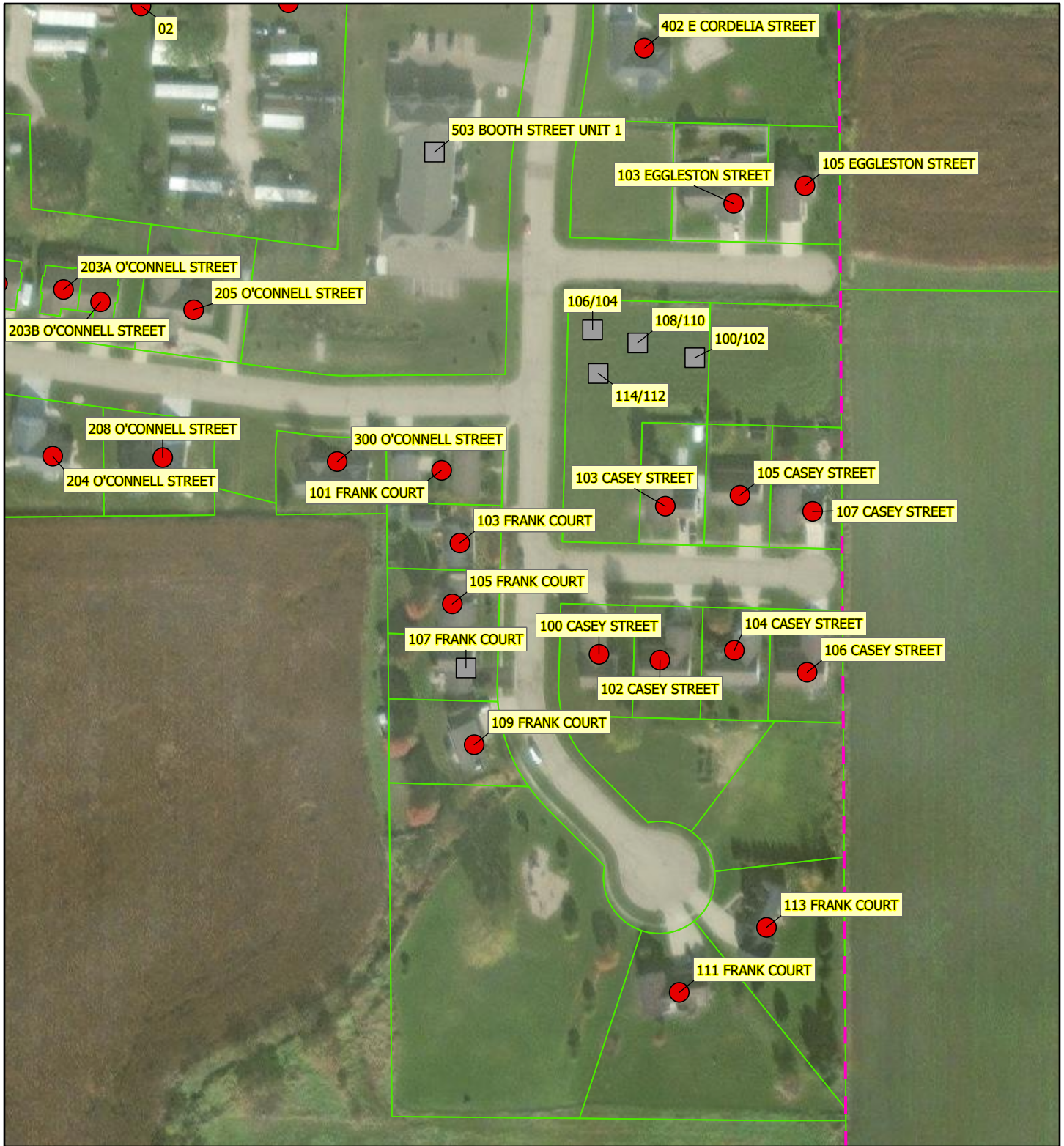


Fox Lake Water Utility (City) (PWSID 11401456):

Initial Lead Service Line Inventory 2024

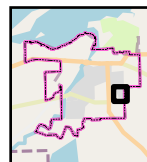
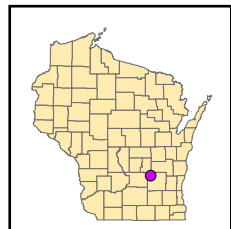
Service Lines where the street or property side material is unknown, and may contain lead

SCR Region
17/19



Legend

- Unknown Service Line Material, May Contain Lead or Galvanized
- Service Line
- Wisconsin Parcels (2023)
- Water System Boundary



0 100 200 ft.



Fox Lake Water Utility (City)
(PWSID 11401456):

Initial Lead Service Line Inventory 2024

Service Lines where the street or property side material is unknown, and may contain lead

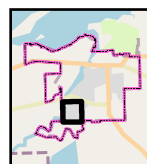
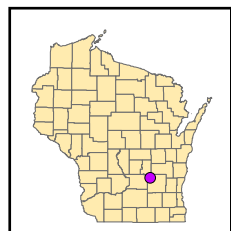
SCR Region

18/19



Legend

- Unknown Service Line Material, May Contain Lead or Galvanized
- Service Line
- Wisconsin Parcels (2023)
- Water System Boundary



0 140 280 ft.



**Fox Lake Water Utility (City)
(PWSID 11401456):**

Initial Lead Service Line Inventory 2024

Service Lines where the street or property side material is unknown, and may contain lead

SCR Region
19/19

Attachment E – Addresses Requiring Consumer Notifications

SITE ID	LOCATIONAL IDENTIFIER	CLASSIFICATION FOR ENTIRE SERVICE LINE
02	203 W STATE STREET	Lead Status Unknown
	315 MILL STREET	Lead Status Unknown
	101 CAYUSE COURT	Lead Status Unknown
	102 WE GO TRAIL	Lead Status Unknown
	306 W STATE STREET	Lead Status Unknown
	408 W GREEN STREET	Lead Status Unknown
	212 S COLLEGE AVENUE	Lead Status Unknown
	321 THIRD STREET	Lead Status Unknown
	315 ROSEDALE AVENUE	Lead Status Unknown
	203B O'CONNELL STREET	Lead Status Unknown
	400 S COLLEGE AVENUE	Lead Status Unknown
	511 ANN STREET	Lead Status Unknown
01	302 ROSEDALE AVENUE	Lead Status Unknown
	303 THIRD STREET	Lead Status Unknown
	221 FOREST STREET	Lead Status Unknown
	200 E CORDELIA STREET	Lead Status Unknown
	305 S DEPOT STREET	Lead Status Unknown
	210 ANN STREET	Lead Status Unknown
	104 CASEY STREET	Lead Status Unknown
	123 E CHERRY STREET	Lead Status Unknown
	739 STATE STREET	Lead Status Unknown
	110 WEED STREET	Lead Status Unknown
	311 E HAMILTON STREET	Lead Status Unknown
	116 CENTER STREET	Lead Status Unknown
	203 N COLLEGE AVENUE	Lead Status Unknown
	103 JANSEN DRIVE	Lead Status Unknown
	305 W GREEN STREET UNIT 1	Lead Status Unknown
	313 FOREST STREET	Lead Status Unknown
	508 MILL STREET	Lead Status Unknown
	106 RECHEK CIRCLE DRIVE	Lead Status Unknown
	209 FOREST STREET	Lead Status Unknown
	117 JANSEN DRIVE	Lead Status Unknown
	101 ORVILLE LANE	Lead Status Unknown
	216 SPRING STREET	Lead Status Unknown
	406 WELLS STREET	Lead Status Unknown
Lot between 106 and 104 Reчек Dr	Lot between 106 and 104 Reчек Dr	Lead Status Unknown
Lot between 118 and 114 Makenick St	Lot between 118 and 114 Makenick St	Lead Status Unknown
Lot between 106 and 110 N College Ave	Lot between 106 and 110 N College Ave	Lead Status Unknown

Lot between 102 Recheck and 132 Seminary St	Lot between 102 Recheck and 132 Seminary St	Lead Status Unknown
Plot to the right of 210 Weed Street and across from 207 Weed st.	Plot to the right of 210 Weed Street and across from 207 Weed st.	Lead Status Unknown
Parking lot at the corner of Makenick and State streets	Parking lot at the corner of Makenick and State streets	Lead Status Unknown
Lot between 216 Weed St. and 107 Recheck Dr.	Lot between 216 Weed St. and 107 Recheck Dr.	Lead Status Unknown
Lot between 308 W Crocker and 108 Rosendale Ave	Lot between 308 W Crocker and 108 Rosendale Ave	Lead Status Unknown
	225 E STATE STREET	Lead Status Unknown
	205 W CHERRY STREET	Lead Status Unknown
	319 E HAMILTON STREET	Lead Status Unknown
	210 E HAMILTON STREET	Lead Status Unknown
	105 EDGELAWN DRIVE	Lead Status Unknown
	107 EDGELAWN DRIVE	Lead Status Unknown
	109 EDGELAWN DRIVE	Lead Status Unknown
	317 E HAMILTON STREET	Lead Status Unknown
	202 BOOTH STREET	Lead Status Unknown
	208 BOOTH STREET	Lead Status Unknown
	313 E HAMILTON STREET	Lead Status Unknown
	305 E HAMILTON STREET	Lead Status Unknown
	303 E HAMILTON STREET	Lead Status Unknown
	307 E HAMILTON STREET	Lead Status Unknown
	301 E HAMILTON STREET	Lead Status Unknown
	211 E HAMILTON STREET	Lead Status Unknown
	315 E HAMILTON STREET	Lead Status Unknown
	209 E HAMILTON STREET	Lead Status Unknown
	203 E HAMILTON STREET	Lead Status Unknown
	207 E HAMILTON STREET	Lead Status Unknown
	205 E HAMILTON STREET	Lead Status Unknown
	309 E HAMILTON STREET	Lead Status Unknown
	201 E HAMILTON STREET	Lead Status Unknown
	117 CENTER STREET	Lead Status Unknown
	115 CENTER STREET	Lead Status Unknown
	109 JANSEN DRIVE	Lead Status Unknown
	107 JANSEN DRIVE	Lead Status Unknown
	109 CENTER STREET	Lead Status Unknown
	113 CENTER STREET	Lead Status Unknown
	107 CENTER STREET	Lead Status Unknown
	105 CENTER STREET	Lead Status Unknown
	209 W STATE STREET	Lead Status Unknown
	114 CENTER STREET	Lead Status Unknown
	112 CENTER STREET	Lead Status Unknown
	108 CENTER STREET	Lead Status Unknown
	106 CENTER STREET	Lead Status Unknown

104 CENTER STREET	Lead Status Unknown
101 W STATE STREET	Lead Status Unknown
103 W STATE STREET	Lead Status Unknown
107 W STATE STREET	Lead Status Unknown
114 W STATE STREET	Lead Status Unknown
205 W STATE STREET	Lead Status Unknown
214 W STATE STREET	Lead Status Unknown
206 W STATE STREET	Lead Status Unknown
312 W STATE STREET	Lead Status Unknown
310 W STATE STREET	Lead Status Unknown
411 W STATE STREET	Lead Status Unknown
118 W STATE STREET	Lead Status Unknown
529 W STATE STREET	Lead Status Unknown
521 W STATE STREET	Lead Status Unknown
503 W STATE STREET	Lead Status Unknown
515 W STATE STREET	Lead Status Unknown
523 W STATE STREET	Lead Status Unknown
522 W STATE STREET	Lead Status Unknown
520 W STATE STREET	Lead Status Unknown
500 W STATE STREET UNIT 101	Lead Status Unknown
104 JANSEN DRIVE	Lead Status Unknown
119 JANSEN DRIVE	Lead Status Unknown
112 JANSEN DRIVE	Lead Status Unknown
115 JANSEN DRIVE	Lead Status Unknown
111 JANSEN DRIVE	Lead Status Unknown
105 JANSEN DRIVE	Lead Status Unknown
701 W STATE STREET	Lead Status Unknown
609 W STATE STREET	Lead Status Unknown
608 W STATE STREET	Lead Status Unknown
204 FOREST STREET	Lead Status Unknown
127 WEED STREET	Lead Status Unknown
112 FOREST STREET	Lead Status Unknown
132 SEMINARY STREET	Lead Status Unknown
311 DAVIS STREET	Lead Status Unknown
331 E HAMILTON STREET	Lead Status Unknown
422 E STATE STREET	Lead Status Unknown
213 WEED STREET UNIT 101	Lead Status Unknown
129 E HAMILTON STREET	Lead Status Unknown
421 E STATE STREET	Lead Status Unknown
211 ACADEMY STREET	Lead Status Unknown
101 SECOND STREET	Lead Status Unknown
212 ACADEMY STREET	Lead Status Unknown
603 W CROCKER STREET	Lead Status Unknown
601 W CROCKER STREET	Lead Status Unknown
309 ACADEMY STREET	Lead Status Unknown
104 RECHEK CIRCLE DRIVE	Lead Status Unknown
102 RECHEK CIRCLE DRIVE	Lead Status Unknown

210 WEED STREET	Lead Status Unknown
220 WEED STREET	Lead Status Unknown
219 WEED STREET	Lead Status Unknown
221 WEED STREET	Lead Status Unknown
301 WEED STREET	Lead Status Unknown
321 WEED STREET	Lead Status Unknown
103 SECOND STREET	Lead Status Unknown
300 MILL STREET	Lead Status Unknown
606 W CROCKER STREET	Lead Status Unknown
318 WEED STREET	Lead Status Unknown
210 ACADEMY STREET	Lead Status Unknown
202 LINDEN LANE	Lead Status Unknown
104 FOREST STREET	Lead Status Unknown
211 FOREST STREET	Lead Status Unknown
740 W STATE STREET	Lead Status Unknown
107 RECHEK CIRCLE DRIVE	Lead Status Unknown
222 WEED STREET	Lead Status Unknown
305 WEED STREET	Lead Status Unknown
314 WEED STREET	Lead Status Unknown
314A WEED STREET	Lead Status Unknown
316 WEED STREET	Lead Status Unknown
207 ACADEMY STREET	Lead Status Unknown
209 ACADEMY STREET	Lead Status Unknown
214 ACADEMY STREET	Lead Status Unknown
216 ACADEMY STREET	Lead Status Unknown
216 WEED STREET	Lead Status Unknown
223 WEED STREET	Lead Status Unknown
309 WEED STREET	Lead Status Unknown
311 WEED STREET	Lead Status Unknown
312 WEED STREET	Lead Status Unknown
206 SPRING STREET	Lead Status Unknown
300 S COLLEGE AVENUE	Lead Status Unknown
303 S COLLEGE AVENUE	Lead Status Unknown
204 W CHERRY STREET	Lead Status Unknown
220 S COLLEGE AVENUE	Lead Status Unknown
200 W GREEN STREET	Lead Status Unknown
104 W GREEN STREET	Lead Status Unknown
100 W GREEN STREET	Lead Status Unknown
102 N DEPOT STREET	Lead Status Unknown
103 E STATE STREET	Lead Status Unknown
212 NA WATA CIRCLE	Lead Status Unknown
305 S COLLEGE AVENUE	Lead Status Unknown
307 S COLLEGE AVENUE	Lead Status Unknown
202 W GREEN STREET	Lead Status Unknown
205 W GREEN STREET	Lead Status Unknown
101 W GREEN STREET	Lead Status Unknown
248 E STATE STREET UNIT 1	Lead Status Unknown

307 E STATE STREET	Lead Status Unknown
203 E STATE STREET	Lead Status Unknown
249 E STATE STREET	Lead Status Unknown
119 E STATE STREET	Lead Status Unknown
101 E STATE STREET	Lead Status Unknown
214 NA WATA CIRCLE	Lead Status Unknown
207 WE GO TRAIL	Lead Status Unknown
208 WE GO TRAIL	Lead Status Unknown
205 WE GO TRAIL	Lead Status Unknown
203 WE GO TRAIL	Lead Status Unknown
302 S COLLEGE AVENUE	Lead Status Unknown
308 S COLLEGE AVENUE	Lead Status Unknown
219 S COLLEGE AVENUE	Lead Status Unknown
201 W CHERRY STREET	Lead Status Unknown
210 W GREEN STREET	Lead Status Unknown
204 W GREEN STREET	Lead Status Unknown
108 W GREEN STREET	Lead Status Unknown
207 W GREEN STREET	Lead Status Unknown
203 W GREEN STREET	Lead Status Unknown
207 E STATE STREET	Lead Status Unknown
215 E STATE STREET	Lead Status Unknown
235 E STATE STREET	Lead Status Unknown
245 E STATE STREET	Lead Status Unknown
206 N DEPOT STREET	Lead Status Unknown
202 N DEPOT STREET	Lead Status Unknown
216 NA WATA CIRCLE	Lead Status Unknown
206 W GREEN STREET	Lead Status Unknown
204 WE GO TRAIL	Lead Status Unknown
201 WE GO TRAIL	Lead Status Unknown
202 WE GO TRAIL	Lead Status Unknown
110 WE GO TRAIL	Lead Status Unknown
104 WE GO TRAIL	Lead Status Unknown
101 OH KAY DRIVE	Lead Status Unknown
720 W STATE STREET	Lead Status Unknown
107 FOREST STREET	Lead Status Unknown
215 FOREST STREET	Lead Status Unknown
217 FOREST STREET	Lead Status Unknown
223 FOREST STREET	Lead Status Unknown
301 FOREST STREET	Lead Status Unknown
309 FOREST STREET	Lead Status Unknown
312 FOREST STREET	Lead Status Unknown
310 FOREST STREET	Lead Status Unknown
304 FOREST STREET	Lead Status Unknown
220 FOREST STREET	Lead Status Unknown
315 E STATE STREET	Lead Status Unknown
239 E STATE STREET	Lead Status Unknown
402 E STATE STREET	Lead Status Unknown

204 N DEPOT STREET	Lead Status Unknown
205 N DEPOT STREET	Lead Status Unknown
200 N DEPOT STREET	Lead Status Unknown
218 FOREST STREET	Lead Status Unknown
214 FOREST STREET	Lead Status Unknown
212 FOREST STREET	Lead Status Unknown
104 WEED STREET	Lead Status Unknown
108 WEED STREET	Lead Status Unknown
112 WEED STREET	Lead Status Unknown
105 WE GO TRAIL	Lead Status Unknown
108 WE GO TRAIL	Lead Status Unknown
106 WE GO TRAIL	Lead Status Unknown
100 WE GO TRAIL	Lead Status Unknown
103 OH KAY DRIVE	Lead Status Unknown
703 W STATE STREET	Lead Status Unknown
103 FOREST STREET	Lead Status Unknown
728 W STATE STREET	Lead Status Unknown
303 FOREST STREET	Lead Status Unknown
307 FOREST STREET	Lead Status Unknown
315 FOREST STREET	Lead Status Unknown
308 FOREST STREET	Lead Status Unknown
306 FOREST STREET	Lead Status Unknown
215 WEED STREET UNIT 101	Lead Status Unknown
200 WE GO TRAIL	Lead Status Unknown
103 WE GO TRAIL	Lead Status Unknown
101 WE GO TRAIL	Lead Status Unknown
107 OH KAY DRIVE	Lead Status Unknown
105 OH KAY DRIVE	Lead Status Unknown
712 W STATE STREET	Lead Status Unknown
733 W STATE STREET	Lead Status Unknown
110 FOREST STREET	Lead Status Unknown
219 FOREST STREET	Lead Status Unknown
305 FOREST STREET	Lead Status Unknown
311 FOREST STREET	Lead Status Unknown
314 FOREST STREET	Lead Status Unknown
302 FOREST STREET	Lead Status Unknown
300 FOREST STREET	Lead Status Unknown
224 FOREST STREET	Lead Status Unknown
222 FOREST STREET	Lead Status Unknown
216 FOREST STREET	Lead Status Unknown
210 FOREST STREET	Lead Status Unknown
103 RECHEK CIRCLE DRIVE	Lead Status Unknown
101 RECHEK CIRCLE DRIVE	Lead Status Unknown
215 S COLLEGE AVENUE	Lead Status Unknown
208 S COLLEGE AVENUE	Lead Status Unknown
210 S COLLEGE AVENUE	Lead Status Unknown
404 S DEPOT STREET	Lead Status Unknown

	205 S DEPOT STREET	Lead Status Unknown
	207 S DEPOT STREET	Lead Status Unknown
	109 E GREEN STREET	Lead Status Unknown
	108 SPRING STREET	Lead Status Unknown
	109 SPRING STREET	Lead Status Unknown
	102 SPRING STREET	Lead Status Unknown
	103 SPRING STREET	Lead Status Unknown
	208 SPRING STREET	Lead Status Unknown
	211 SPRING STREET	Lead Status Unknown
	409 TRENTON STREET	Lead Status Unknown
	305 WAREHOUSE STREET	Lead Status Unknown
	110 WAREHOUSE STREET	Lead Status Unknown
	300 O'CONNELL STREET	Lead Status Unknown
	100 CASEY STREET	Lead Status Unknown
	102 CASEY STREET	Lead Status Unknown
	107 CASEY STREET	Lead Status Unknown
	105 CASEY STREET	Lead Status Unknown
	103 O'CONNELL STREET	Lead Status Unknown
	201A O'CONNELL STREET	Lead Status Unknown
	203A O'CONNELL STREET	Lead Status Unknown
04	406 WELLS STREET	Lead Status Unknown
03	406 WELLS STREET	Lead Status Unknown
	307 E CROCKER STREET	Lead Status Unknown
	101 W CORDELIA STREET	Lead Status Unknown
	203 ANN STREET	Lead Status Unknown
	211 S COLLEGE AVENUE	Lead Status Unknown
	217 S COLLEGE AVENUE	Lead Status Unknown
	307 S DEPOT STREET	Lead Status Unknown
	209 S DEPOT STREET	Lead Status Unknown
	214 S DEPOT STREET	Lead Status Unknown
	104 E GREEN STREET	Lead Status Unknown
	105 E GREEN STREET	Lead Status Unknown
	103 INDUSTRIAL DRIVE	Lead Status Unknown
	106 INDUSTRIAL DRIVE	Lead Status Unknown
	102 KARAVAN DRIVE	Lead Status Unknown
	100 KARAVAN DRIVE	Lead Status Unknown
	604 SPRING STREET UNIT 1	Lead Status Unknown
	204 O'CONNELL STREET	Lead Status Unknown
	208 O'CONNELL STREET	Lead Status Unknown
	101 FRANK COURT	Lead Status Unknown
	111 FRANK COURT	Lead Status Unknown
	113 FRANK COURT	Lead Status Unknown
	103 CASEY STREET	Lead Status Unknown
	103 EGGLESTON STREET	Lead Status Unknown
05	406 WELLS STREET	Lead Status Unknown
01	406 WELLS STREET	Lead Status Unknown
	410 BOOTH STREET UNIT 7	Lead Status Unknown

	109 W CHERRY STREET	Lead Status Unknown
	205 ANN STREET	Lead Status Unknown
	207 ANN STREET	Lead Status Unknown
	207 SPRING STREET	Lead Status Unknown
	207 E CORDELIA STREET	Lead Status Unknown
02	206 E CORDELIA STREET UNIT 1	Lead Status Unknown
	400 S DEPOT STREET	Lead Status Unknown
	303 E CROCKER STREET	Lead Status Unknown
	312 BOOTH STREET	Lead Status Unknown
	307 BOOTH STREET	Lead Status Unknown
	407 WELLS STREET	Lead Status Unknown
	106 MAKENICK STREET	Lead Status Unknown
03	206 E CORDELIA STREET UNIT 1	Lead Status Unknown
	304 S DEPOT STREET	Lead Status Unknown
	308 S DEPOT STREET	Lead Status Unknown
01	200 S DEPOT STREET	Lead Status Unknown
02	200 S DEPOT STREET	Lead Status Unknown
	213 S DEPOT STREET	Lead Status Unknown
	108 E GREEN STREET	Lead Status Unknown
	200 SPRING STREET	Lead Status Unknown
	107 E GREEN STREET	Lead Status Unknown
	105 SPRING STREET	Lead Status Unknown
	106 SPRING STREET	Lead Status Unknown
	219 SPRING STREET	Lead Status Unknown
	210 SPRING STREET	Lead Status Unknown
	212 SPRING STREET	Lead Status Unknown
	213 SPRING STREET	Lead Status Unknown
	215 SPRING STREET	Lead Status Unknown
	408 S DEPOT STREET	Lead Status Unknown
	403 S DEPOT STREET	Lead Status Unknown
	100 INDUSTRIAL DRIVE	Lead Status Unknown
	101 WAREHOUSE STREET	Lead Status Unknown
	105 WAREHOUSE STREET	Lead Status Unknown
	215 WAREHOUSE STREET	Lead Status Unknown
	301 WAREHOUSE STREET	Lead Status Unknown
	102 WAREHOUSE STREET	Lead Status Unknown
	106 WAREHOUSE STREET	Lead Status Unknown
	100 WASHINGTON STREET	Lead Status Unknown
	620 SPRING STREET UNIT 1	Lead Status Unknown
	103 FRANK COURT	Lead Status Unknown
	105 FRANK COURT	Lead Status Unknown
	109 FRANK COURT	Lead Status Unknown
	106 CASEY STREET	Lead Status Unknown
	201B O'CONNELL STREET	Lead Status Unknown
	205 O'CONNELL STREET	Lead Status Unknown
	501 SPRING STREET	Lead Status Unknown
	104 E CORDELIA STREET	Lead Status Unknown

	105 EGGLESTON STREET	Lead Status Unknown
	402 E CORDELIA STREET	Lead Status Unknown
	305 E CROCKER STREET	Lead Status Unknown
	300 SPRING STREET	Lead Status Unknown
	105 W CROCKER STREET	Lead Status Unknown
	204 SPRING STREET	Lead Status Unknown
	205 SPRING STREET	Lead Status Unknown
	209 S COLLEGE AVENUE	Lead Status Unknown
	207 S COLLEGE AVENUE	Lead Status Unknown
	213 S COLLEGE AVENUE	Lead Status Unknown
	216 S COLLEGE AVENUE	Lead Status Unknown
	212 S DEPOT STREET	Lead Status Unknown
	206 S COLLEGE AVENUE	Lead Status Unknown
	408 S COLLEGE AVENUE	Lead Status Unknown
	411 S COLLEGE AVENUE	Lead Status Unknown
	304 THIRD STREET	Lead Status Unknown
	501 TRENTON STREET	Lead Status Unknown
	320 SECOND STREET	Lead Status Unknown
01	101 ROSEDALE AVENUE	Lead Status Unknown
	213 DAVIS STREET	Lead Status Unknown
	211 DAVIS STREET	Lead Status Unknown
	201 DAVIS STREET	Lead Status Unknown
	212 DAVIS STREET	Lead Status Unknown
	121 N COLLEGE AVENUE	Lead Status Unknown
	112 N COLLEGE AVENUE	Lead Status Unknown
	210 W HAMILTON STREET	Lead Status Unknown
	308 W CROCKER STREET	Lead Status Unknown
	306 W CROCKER STREET	Lead Status Unknown
	215 DAVIS STREET	Lead Status Unknown
	303 W CROCKER STREET	Lead Status Unknown
	313 S COLLEGE AVENUE	Lead Status Unknown
	307 W CROCKER STREET	Lead Status Unknown
01	204 ROSEDALE AVENUE	Lead Status Unknown
	308 W CORDELIA STREET	Lead Status Unknown
02	302 ROSEDALE AVENUE	Lead Status Unknown
	303 ROSEDALE AVENUE	Lead Status Unknown
	113 ROSEDALE AVENUE	Lead Status Unknown
	111 ROSEDALE AVENUE	Lead Status Unknown
	105 ROSEDALE AVENUE	Lead Status Unknown
02	101 ROSEDALE AVENUE	Lead Status Unknown
	302 W CHERRY STREET	Lead Status Unknown
	307 W CHERRY STREET	Lead Status Unknown
	407 W CHERRY STREET	Lead Status Unknown
	204 DAVIS STREET	Lead Status Unknown
	403 W GREEN STREET	Lead Status Unknown
	114 S COLLEGE AVENUE	Lead Status Unknown
	210 W STATE STREET	Lead Status Unknown

	114 N COLLEGE AVENUE	Lead Status Unknown
	116 N COLLEGE AVENUE	Lead Status Unknown
	115 MAKENICK STREET	Lead Status Unknown
	303 W HAMILTON STREET	Lead Status Unknown
	114 MAKENICK STREET	Lead Status Unknown
	112 MAKENICK STREET	Lead Status Unknown
	407 S COLLEGE AVENUE	Lead Status Unknown
	405 S COLLEGE AVENUE	Lead Status Unknown
	404 S COLLEGE AVENUE	Lead Status Unknown
	305 ROSEDALE AVENUE	Lead Status Unknown
	215 ROSEDALE AVENUE	Lead Status Unknown
	211 ROSEDALE AVENUE	Lead Status Unknown
	207 ROSEDALE AVENUE	Lead Status Unknown
	205 ROSEDALE AVENUE	Lead Status Unknown
	110 ROSEDALE AVENUE UNIT 1	Lead Status Unknown
	107 ROSEDALE AVENUE	Lead Status Unknown
	406 W CHERRY STREET	Lead Status Unknown
	304 W CHERRY STREET	Lead Status Unknown
	219 DAVIS STREET	Lead Status Unknown
	217 DAVIS STREET	Lead Status Unknown
	209 DAVIS STREET	Lead Status Unknown
	205 DAVIS STREET	Lead Status Unknown
	210 DAVIS STREET	Lead Status Unknown
	401 W GREEN STREET	Lead Status Unknown
	405 W GREEN STREET	Lead Status Unknown
	118 S COLLEGE AVENUE	Lead Status Unknown
	109 N COLLEGE AVENUE	Lead Status Unknown
	106 N COLLEGE AVENUE	Lead Status Unknown
	110 N COLLEGE AVENUE	Lead Status Unknown
	111 N COLLEGE AVENUE	Lead Status Unknown
	117 N COLLEGE AVENUE	Lead Status Unknown
	115 N COLLEGE AVENUE	Lead Status Unknown
	113 N COLLEGE AVENUE	Lead Status Unknown
	113 MAKENICK STREET	Lead Status Unknown
	309 WELLS STREET	Lead Status Unknown
	108 MAKENICK STREET	Lead Status Unknown
	118 MAKENICK STREET	Lead Status Unknown
	204 W HAMILTON STREET	Lead Status Unknown
	402 SPRING STREET	Lead Status Unknown
	109 E CORDELIA STREET	Lead Status Unknown
	412 S DEPOT STREET	Lead Status Unknown
01	206 E CORDELIA STREET UNIT 1	Lead Status Unknown
	401 S DEPOT STREET	Lead Status Unknown
	312 S DEPOT STREET	Lead Status Unknown
	401 WELLS STREET	Lead Status Unknown
	200 E CHERRY STREET	Lead Status Unknown
	208 E CHERRY STREET	Lead Status Unknown

	211 E CHERRY STREET	Lead Status Unknown
	203 E CHERRY STREET	Lead Status Unknown
	400 BOOTH STREET	Lead Status Unknown
	402 BOOTH STREET	Lead Status Unknown
	404 BOOTH STREET	Lead Status Unknown
	308 BOOTH STREET	Lead Status Unknown
	300 BOOTH STREET	Lead Status Unknown
	105 MAKENICK STREET	Lead Status Unknown
	302 W HAMILTON STREET	Lead Status Unknown
	635 SPRING STREET	Lead Status Unknown
	404 SPRING STREET	Lead Status Unknown
	107 E CORDELIA STREET	Lead Status Unknown
	103 E CORDELIA STREET	Lead Status Unknown
	108 E CORDELIA STREET	Lead Status Unknown
	404 W CHERRY STREET	Lead Status Unknown
	402 W CHERRY STREET	Lead Status Unknown
	406 S COLLEGE AVENUE	Lead Status Unknown
	108 ROSEDALE AVENUE	Lead Status Unknown
	301 S COLLEGE AVENUE	Lead Status Unknown
	110 MAKENICK STREET	Lead Status Unknown
	206 W HAMILTON STREET	Lead Status Unknown
	400 SPRING STREET	Lead Status Unknown
	121 CENTER STREET	Lead Status Unknown
	313 S DEPOT STREET	Lead Status Unknown
	209 E CHERRY STREET	Lead Status Unknown
	302 WELLS STREET	Lead Status Unknown
	213 E CHERRY STREET	Lead Status Unknown
	215 E CHERRY STREET	Lead Status Unknown
	217 E CHERRY STREET	Lead Status Unknown
	304 BOOTH STREET	Lead Status Unknown
	405 WELLS STREET	Lead Status Unknown
	104 EDGELAWN DRIVE	Lead Status Unknown
02	225 W STATE STREET	Lead Status Unknown
01	301A W STATE STREET	Lead Status Unknown
02	301A W STATE STREET	Lead Status Unknown
02	302 W STATE STREET	Lead Status Unknown
01	211 W STATE STREET	Lead Status Unknown
02	211 W STATE STREET	Lead Status Unknown
01	213 W STATE STREET	Lead Status Unknown
02	213 W STATE STREET	Lead Status Unknown
01	215 W STATE STREET	Lead Status Unknown
02	215 W STATE STREET	Lead Status Unknown
01	217 W STATE STREET	Lead Status Unknown
02	217 W STATE STREET	Lead Status Unknown
01	219 W STATE STREET	Lead Status Unknown
02	219 W STATE STREET	Lead Status Unknown
01	223 W STATE STREET	Lead Status Unknown

02	223 W STATE STREET	Lead Status Unknown
01	225 W STATE STREET	Lead Status Unknown
01	303 W STATE STREET	Lead Status Unknown
02	303 W STATE STREET	Lead Status Unknown
01	305 W STATE STREET	Lead Status Unknown
02	305 W STATE STREET	Lead Status Unknown
01	306 W STATE STREET	Lead Status Unknown
01	307 W STATE STREET	Lead Status Unknown
02	307 W STATE STREET	Lead Status Unknown
01	309 W STATE STREET	Lead Status Unknown
01	311 W STATE STREET	Lead Status Unknown
01	313 W STATE STREET	Lead Status Unknown
	118 CENTER STREET	Lead Status Unknown
	201 WEED STREET UNIT 101	Lead Status Unknown
	112 E STATE STREET	Lead Status Unknown
	335 MILL STREET	Lead Status Unknown
	207 WEED STREET UNIT 101	Lead Status Unknown
	305 W CHERRY STREET	Lead Status Unknown
B	221 W STATE STREET	Lead Status Unknown
apt. A	221 W STATE STREET	Lead Status Unknown
	111 EDGELAWN DRIVE	Lead Status Unknown
02	317 W STATE STREET	Lead Status Unknown
	317 THIRD STREET	Lead Status Unknown
	253 E STATE STREET	Lead Status Unknown
01	317 W STATE STREET	Lead Status Unknown
02	311 W STATE STREET	Lead Status Unknown
02	313 W STATE STREET	Lead Status Unknown
	117 W STATE STREET	Lead Status Unknown
	130 SEMINARY STREET	Lead Status Unknown
	511 W STATE STREET	Lead Status Unknown
01	212 W STATE STREET	Lead Status Unknown
02	116 W STATE STREET	Lead Status Unknown
01	302 W STATE STREET	Lead Status Unknown
321 E Hamilton St. Fox Lake	323 E HAMILTON STREET	Lead Status Unknown
	312 S COLLEGE AVENUE	Lead Status Unknown
	104 MILL STREET	Lead Status Unknown
	117 MAKENICK STREET	Lead Status Unknown
	610 TRENTON STREET	Lead Status Unknown
	421 MILL STREET	Lead Status Unknown
	407 MILL STREET	Lead Status Unknown
	405 MILL STREET	Lead Status Unknown
	402 MILL STREET	Lead Status Unknown
	329 MILL STREET	Lead Status Unknown
	325 MILL STREET	Lead Status Unknown
	323 MILL STREET	Lead Status Unknown
	324 MILL STREET	Lead Status Unknown
	312 MILL STREET	Lead Status Unknown

	317 MILL STREET	Lead Status Unknown
	310 MILL STREET	Lead Status Unknown
	336 MILL STREET	Lead Status Unknown
	307 MILL STREET	Lead Status Unknown
	301 MILL STREET	Lead Status Unknown
	201 MILL STREET	Lead Status Unknown
	216 MILL STREET	Lead Status Unknown
	208 MILL STREET	Lead Status Unknown
	204 MILL STREET	Lead Status Unknown
	202 MILL STREET	Lead Status Unknown
	404 W STATE STREET	Lead Status Unknown
	406 MILL STREET	Lead Status Unknown
	333 MILL STREET	Lead Status Unknown
	230 MILL STREET	Lead Status Unknown
	217 MILL STREET	Lead Status Unknown
	403 SECOND STREET	Lead Status Unknown
	317 SECOND STREET	Lead Status Unknown
	203 WATER STREET	Lead Status Unknown
	307 THIRD STREET	Lead Status Unknown
	316 THIRD STREET	Lead Status Unknown
	226 MILL STREET	Lead Status Unknown
	222 MILL STREET	Lead Status Unknown
	110 MILL STREET	Lead Status Unknown
	411 SECOND STREET	Lead Status Unknown
	415A SECOND STREET	Lead Status Unknown
02	402 SECOND STREET	Lead Status Unknown
01	402 SECOND STREET	Lead Status Unknown
	103 WATER STREET	Lead Status Unknown
	205 MILL STREET	Lead Status Unknown
	111 MILL STREET	Lead Status Unknown
	337 SECOND STREET	Lead Status Unknown
	338 SECOND STREET	Lead Status Unknown
	328 SECOND STREET	Lead Status Unknown
	303 SECOND STREET	Lead Status Unknown
	600 W CROCKER STREET	Lead Status Unknown
	218 MILL STREET	Lead Status Unknown
	312 SECOND STREET	Lead Status Unknown
	300 SECOND STREET	Lead Status Unknown
	313 SECOND STREET	Lead Status Unknown
	307 SECOND STREET	Lead Status Unknown
	305 SECOND STREET	Lead Status Unknown
	324 THIRD STREET	Lead Status Unknown
	308 THIRD STREET	Lead Status Unknown
	306 THIRD STREET	Lead Status Unknown
	508 TRENTON STREET	Lead Status Unknown
	406 THIRD STREET	Lead Status Unknown
	402 W CROCKER STREET	Lead Status Unknown

	332 SECOND STREET	Lead Status Unknown
	310 SECOND STREET	Lead Status Unknown
	306 SECOND STREET	Lead Status Unknown
	413A SECOND STREET	Lead Status Unknown
	340 SECOND STREET	Lead Status Unknown
	334 SECOND STREET	Lead Status Unknown
	308 SECOND STREET	Lead Status Unknown
	311 SECOND STREET	Lead Status Unknown
	322 THIRD STREET	Lead Status Unknown
	320 THIRD STREET	Lead Status Unknown
	315 THIRD STREET	Lead Status Unknown
	300 THIRD STREET	Lead Status Unknown
	401 W CROCKER STREET	Lead Status Unknown
	304 W CROCKER STREET	Lead Status Unknown
	409 S COLLEGE AVENUE	Lead Status Unknown
	211 W CORDELIA STREET	Lead Status Unknown
02	204 ROSEDALE AVENUE	Lead Status Unknown
	109 ROSEDALE AVENUE	Lead Status Unknown
	303 W CHERRY STREET	Lead Status Unknown
	401 MILL STREET	Lead Status Unknown
	415 MILL STREET	Lead Status Unknown
	409 MILL STREET	Lead Status Unknown
01	416 MILL STREET	Lead Status Unknown
	321 MILL STREET	Lead Status Unknown
	328 MILL STREET	Lead Status Unknown
	319 MILL STREET	Lead Status Unknown
	311 MILL STREET	Lead Status Unknown
	100 WATER STREET	Lead Status Unknown
	334 MILL STREET	Lead Status Unknown
	507 W STATE STREET	Lead Status Unknown
	111 E STATE STREET	Lead Status Unknown
	302 WEED STREET	Lead Status Unknown
	210 NA WATA CIRCLE	Lead Status Unknown
	206 WE GO TRAIL	Lead Status Unknown
	336 SECOND STREET	Lead Status Unknown
	104 O'CONNELL STREET	Lead Status Unknown
02	309 W STATE STREET	Lead Status Unknown
	208 W CORDELIA STREET	Lead Status Unknown
	307 DAVIS STREET	Lead Status Unknown
	115 E STATE STREET	Lead Status Unknown
01	330 MILL STREET	Lead Status Unknown
	400 SECOND STREET	Lead Status Unknown
01	116 W STATE STREET	Lead Status Unknown
02	212 W STATE STREET	Lead Status Unknown
	212 MILL STREET	Lead Status Unknown
	413 MILL STREET	Lead Status Unknown
	411 MILL STREET	Lead Status Unknown

422 MILL STREET	Lead Status Unknown
414 MILL STREET	Lead Status Unknown
412 MILL STREET	Lead Status Unknown
410 MILL STREET	Lead Status Unknown
408 MILL STREET	Lead Status Unknown
404 MILL STREET	Lead Status Unknown
400 MILL STREET	Lead Status Unknown
309 MILL STREET	Lead Status Unknown
308 MILL STREET	Lead Status Unknown
332 MILL STREET	Lead Status Unknown
303 MILL STREET	Lead Status Unknown
221 MILL STREET	Lead Status Unknown
306 MILL STREET	Lead Status Unknown
207 MILL STREET	Lead Status Unknown
304 MILL STREET	Lead Status Unknown
220 MILL STREET	Lead Status Unknown
211 MILL STREET	Lead Status Unknown
203 MILL STREET	Lead Status Unknown