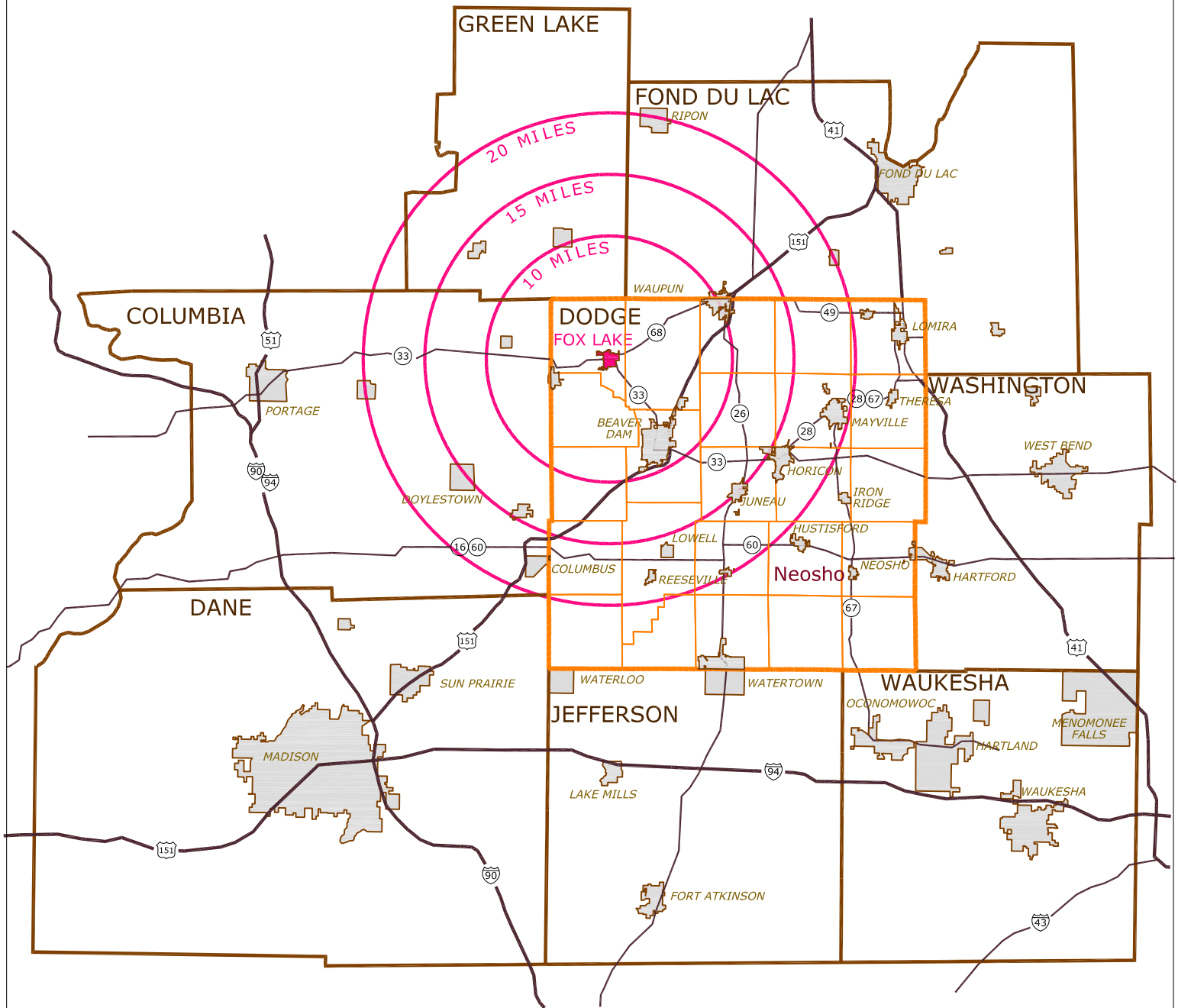
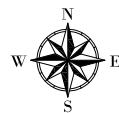


Map 1-1 Regional Setting City of Fox Lake, Dodge County, Wisconsin



- | | |
|-----------------------|----------------------------|
| U.S. Highway | Dodge County Town Boundary |
| State Highway | City or Village |
| County Boundary | Municipality Site |
| Dodge County Boundary | Site Radius Boundary |

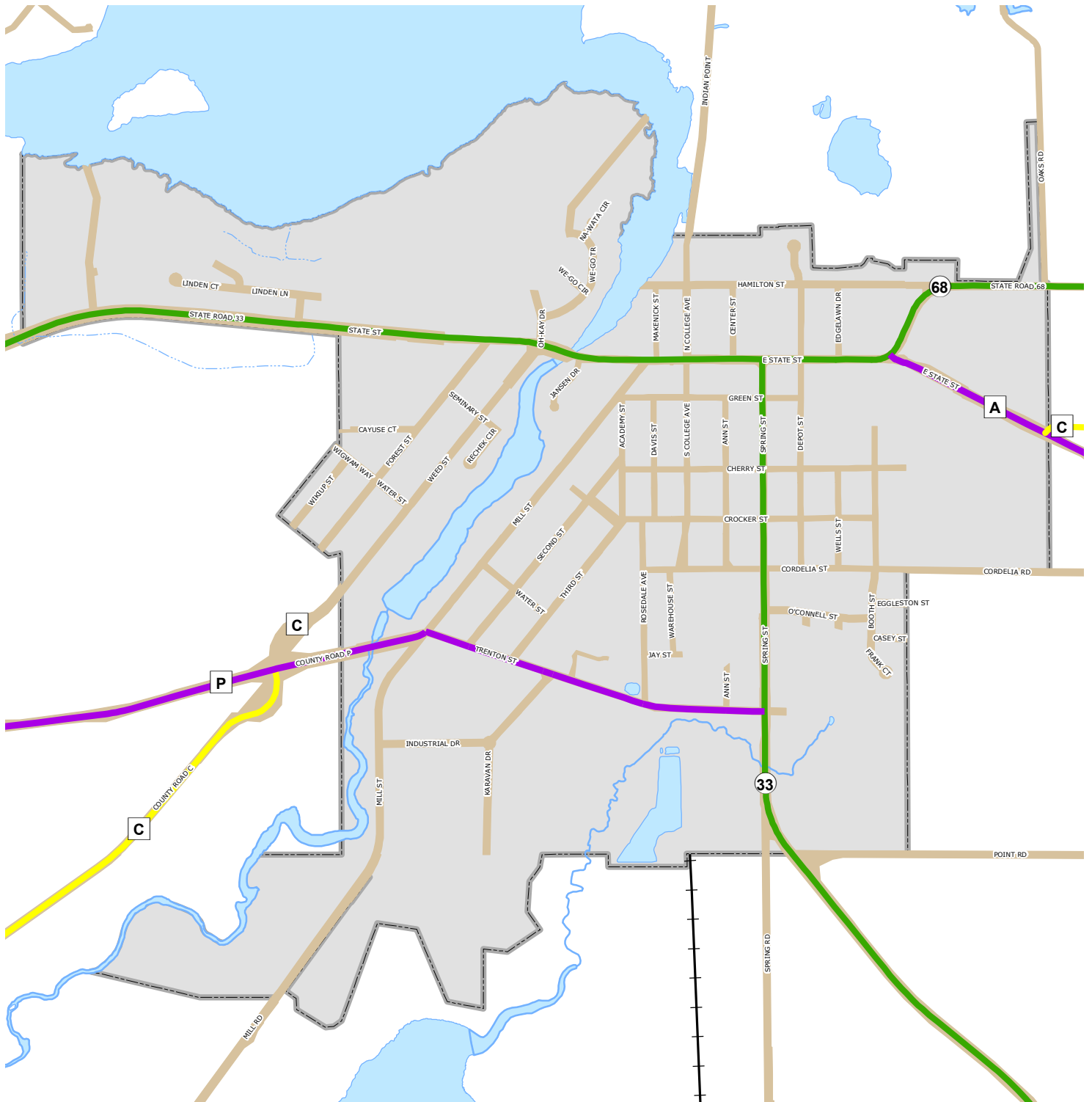


0 10 15 20 25
SCALE: 1 INCH = APPROX. 12 MILES

Dodge County
Land Resources and Parks
Department



Map 3-1, Functional Classification of Highways & Location of Railroads City of Fox Lake, Dodge County, Wisconsin



Legend

Functional Roadway Classification

- Minor Arterials
- Major Collectors
- Minor Collectors

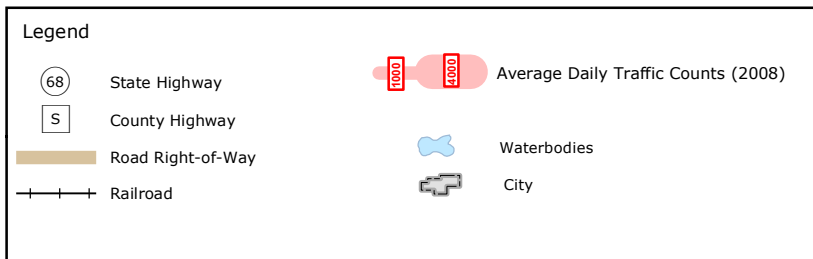
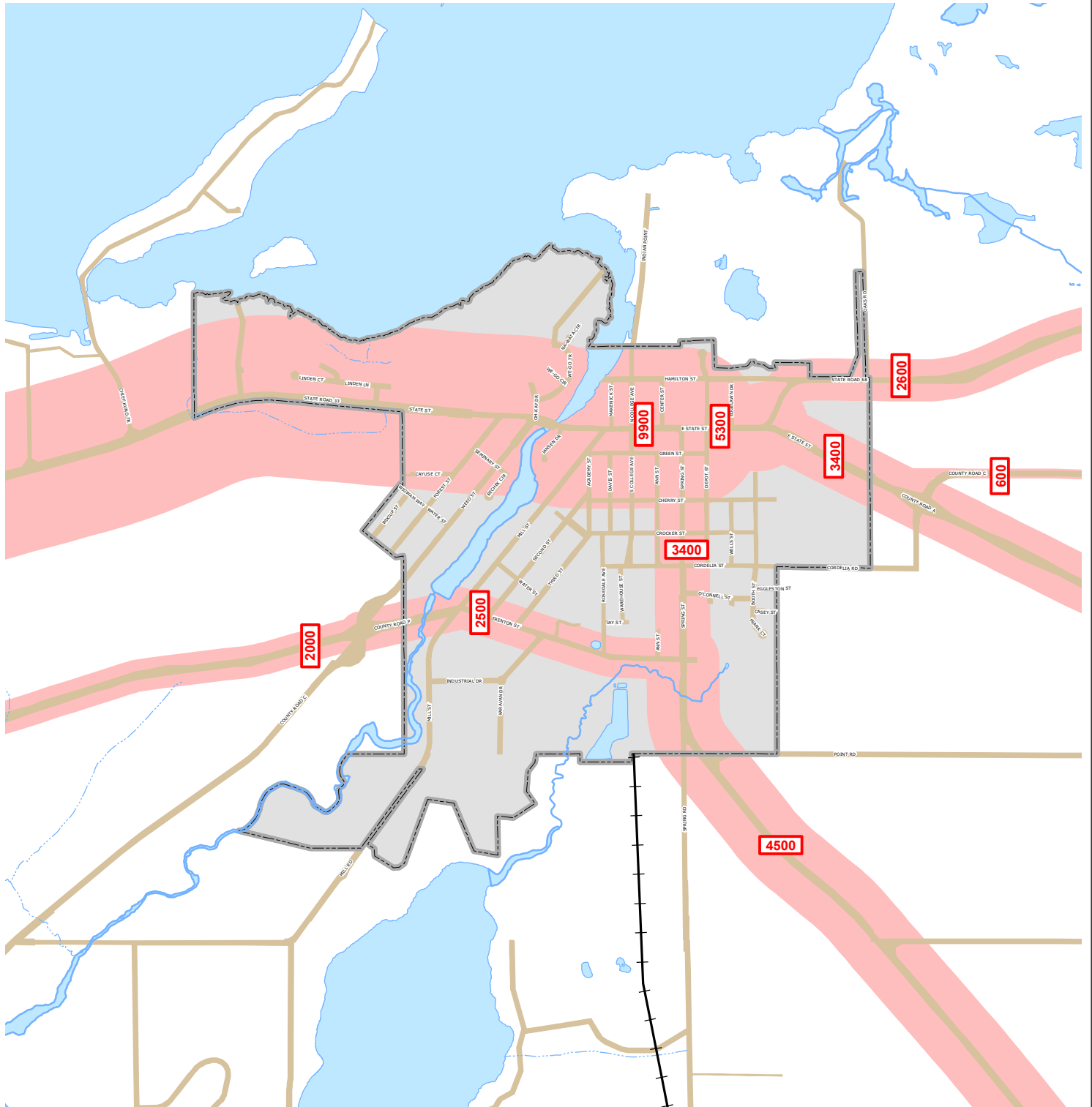
- Railroad
- Road Right-of-Way
- City
- Lake

**Dodge County
Land Resources and Parks
Department**

Northeast corner Dodge County
Wisconsin

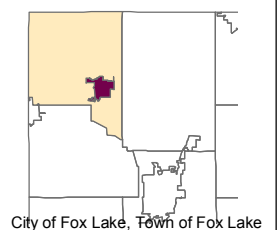
City of Fox Lake, Town of Fox Lake

Map 3-2, Average Daily Traffic Counts
City of Fox Lake, Dodge County, Wisconsin



Dodge County
Land Resources and Parks
Department

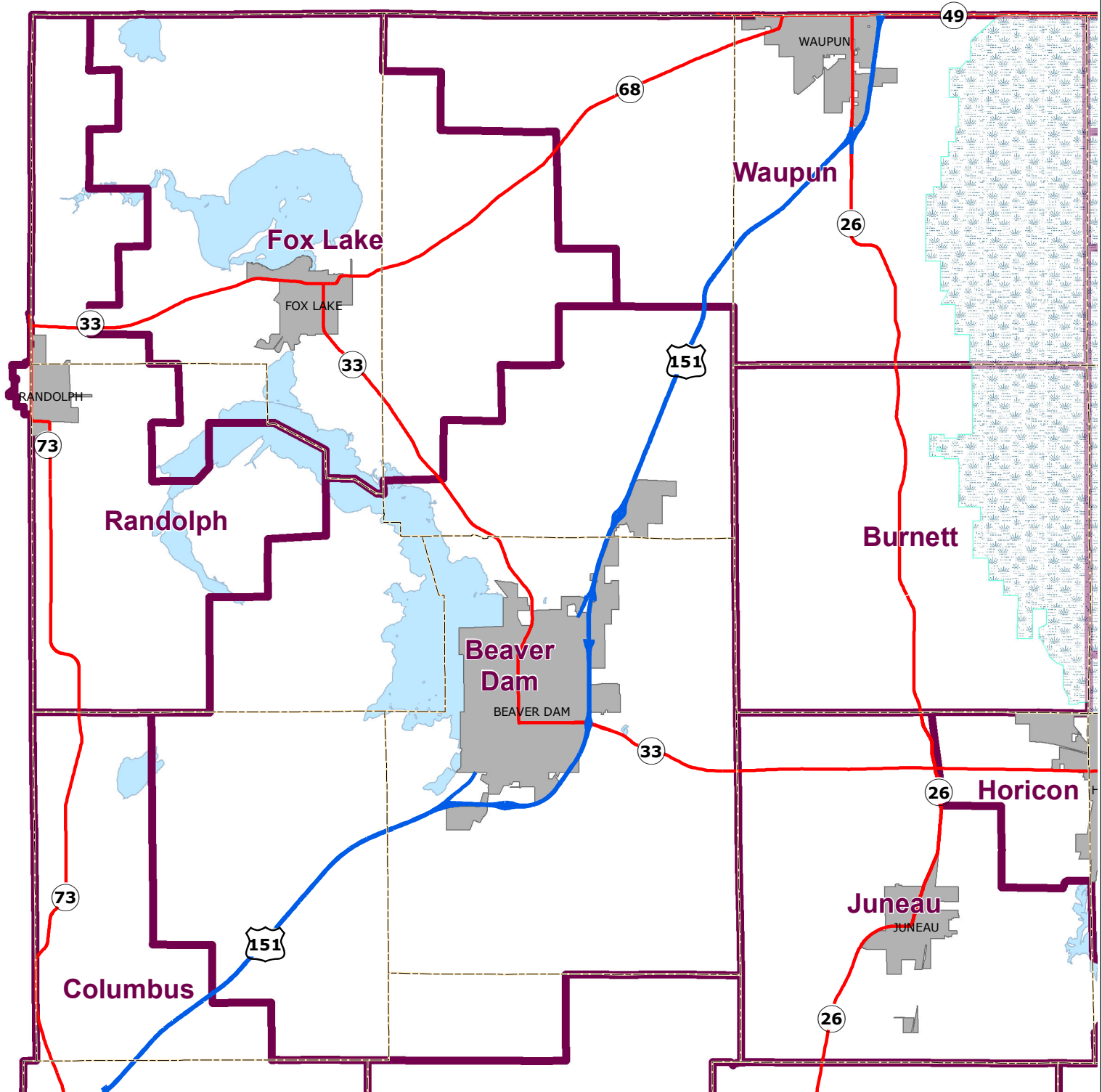
Northeast corner Dodge County
Wisconsin



Source: Dodge County Land Resources and Parks Department, January 2012
2008 WI DOT data

0 650 1,300 2,600 3,900 Feet

Map 4-1, Fire Emergency Service Areas City of Fox Lake, Dodge County, Wisconsin



Legend

	U.S. Highway		Fire Dispatch Regions
	State Highway		Horicon Marsh
	Town Boundaries		Lake
	Municipalities		

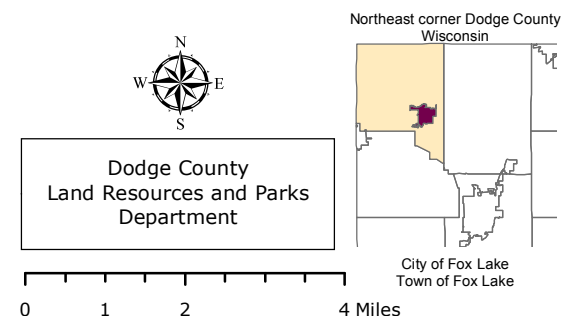
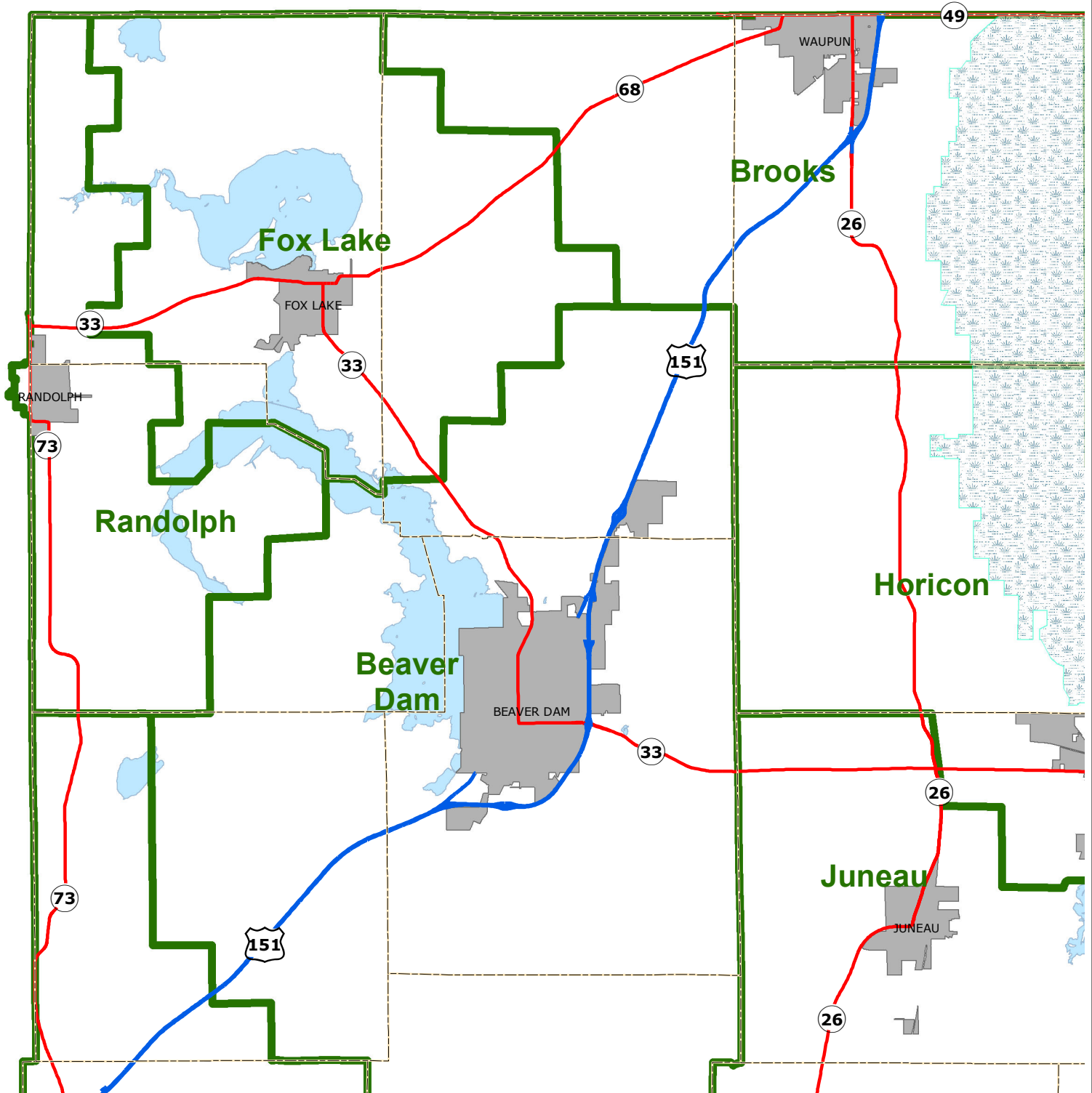
Dodge County Land Resources and Parks Department

Northeast corner Dodge County Wisconsin

City of Fox Lake
Town of Fox Lake

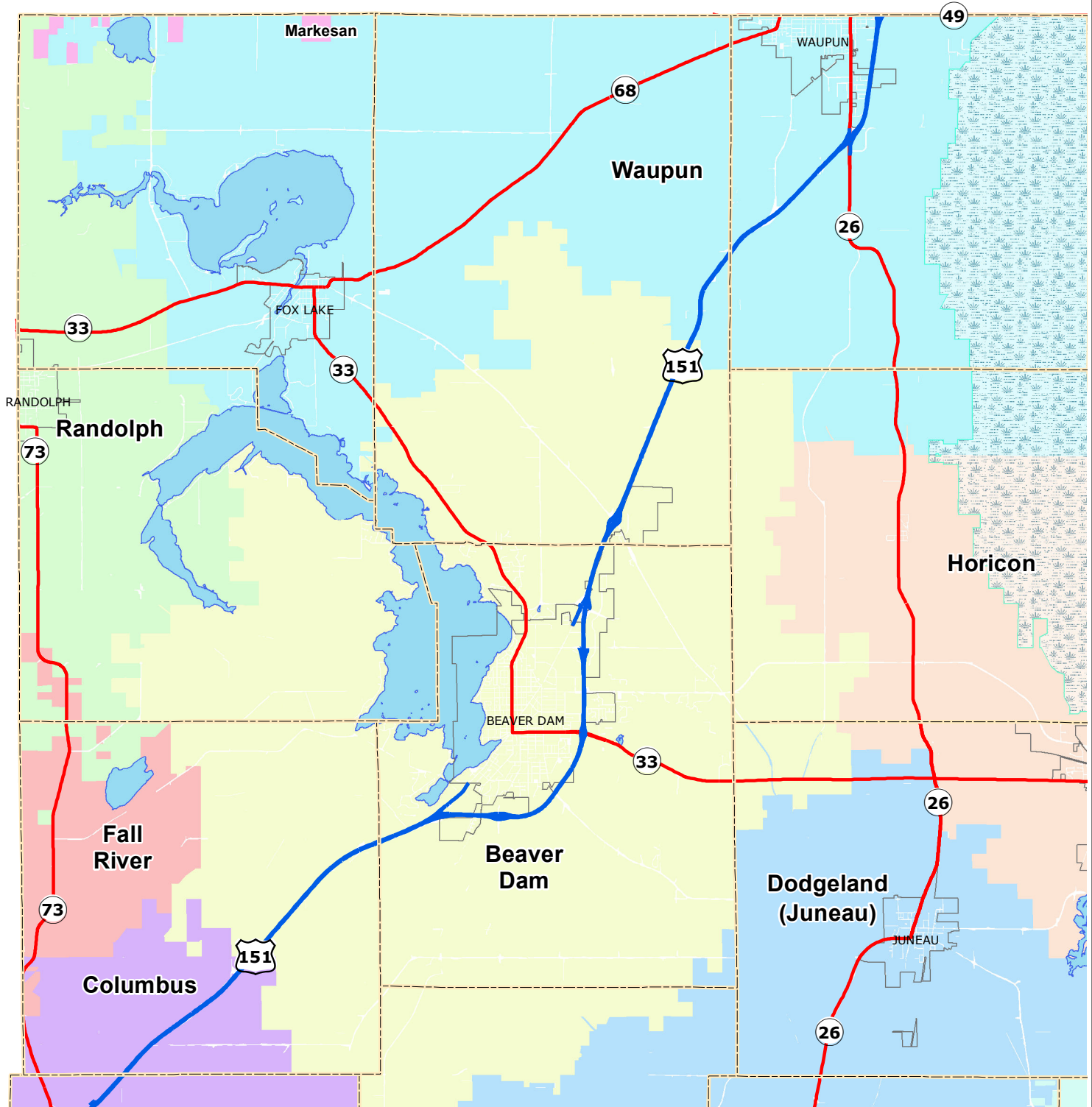
0 1 2 4 Miles

Map 4-2, Emergency Medical Service Areas
City of Fox Lake, Dodge County, Wisconsin



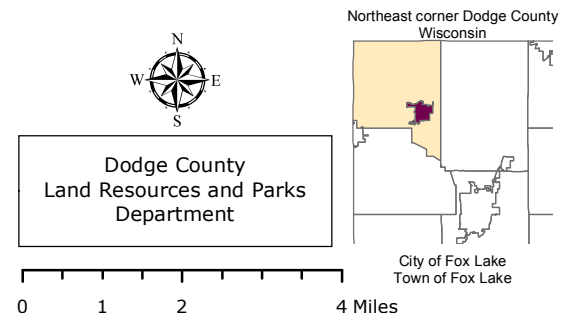
Source: Dodge County Land Resources and Parks Department, January 2012
Dodge County Sheriff's Department, January 2012

Map 4-3, School District Boundaries
City of Fox Lake, Dodge County, Wisconsin

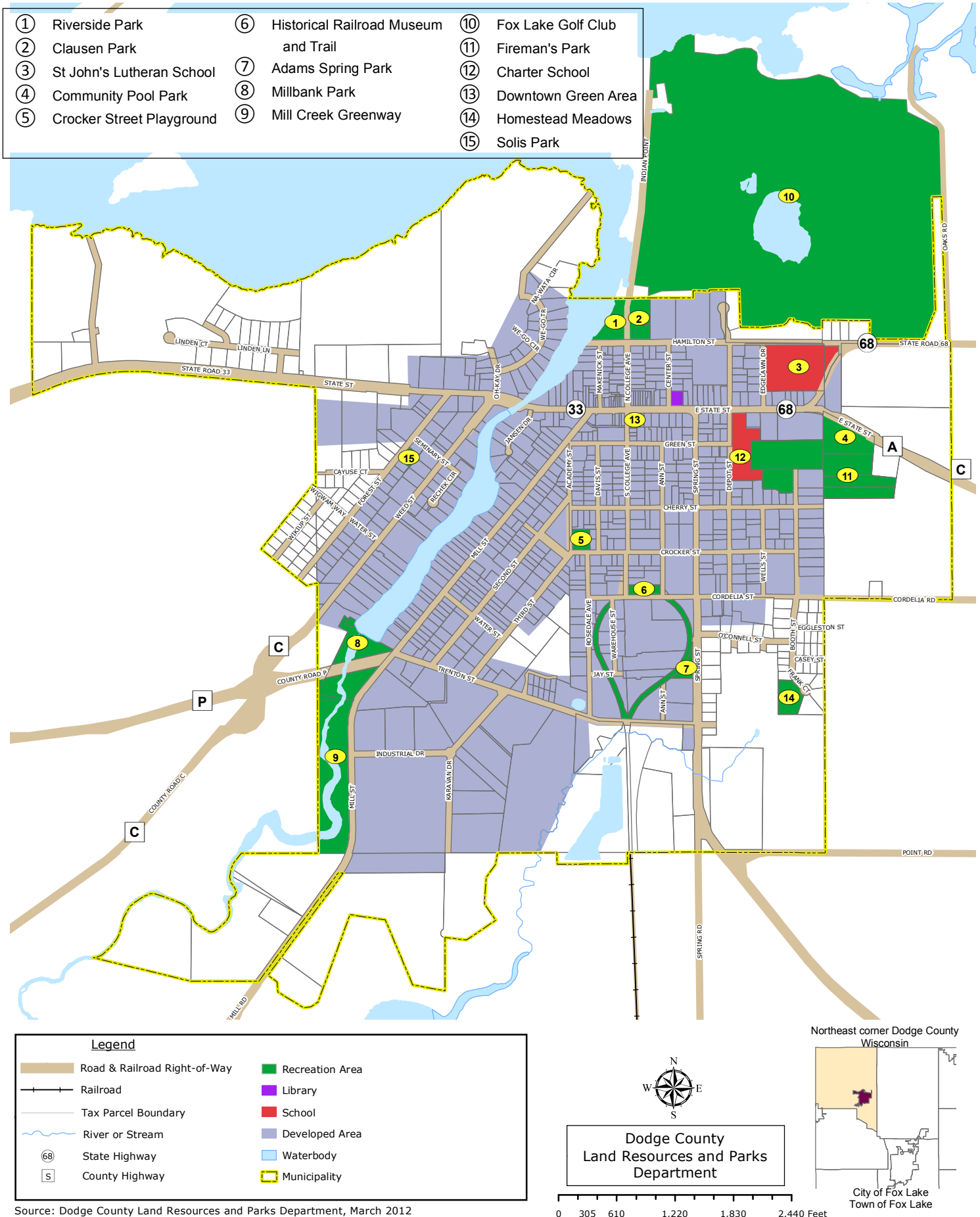


Legend		SCHLOOL DISTRICTS	
	U.S. Highway		BEAVER DAM
	State Highway		COLUMBUS
	Town Boundaries		DODGELAND (JUNEAU)
	Municipalities		FALL RIVER
	Horicon Marsh		HARTFORD J 1
	Lake		HERMAN #22
			LOMIRA
			MAYVILLE
			NEOSHO J 3
			OAKFIELD
			HORICON
			HUSTISFORD
			MARKESAN
			OCONOMOWOC
			RANDOLPH
			RUBICON J 6
			WATERLOO
			WATERTOWN
			WAUPUN

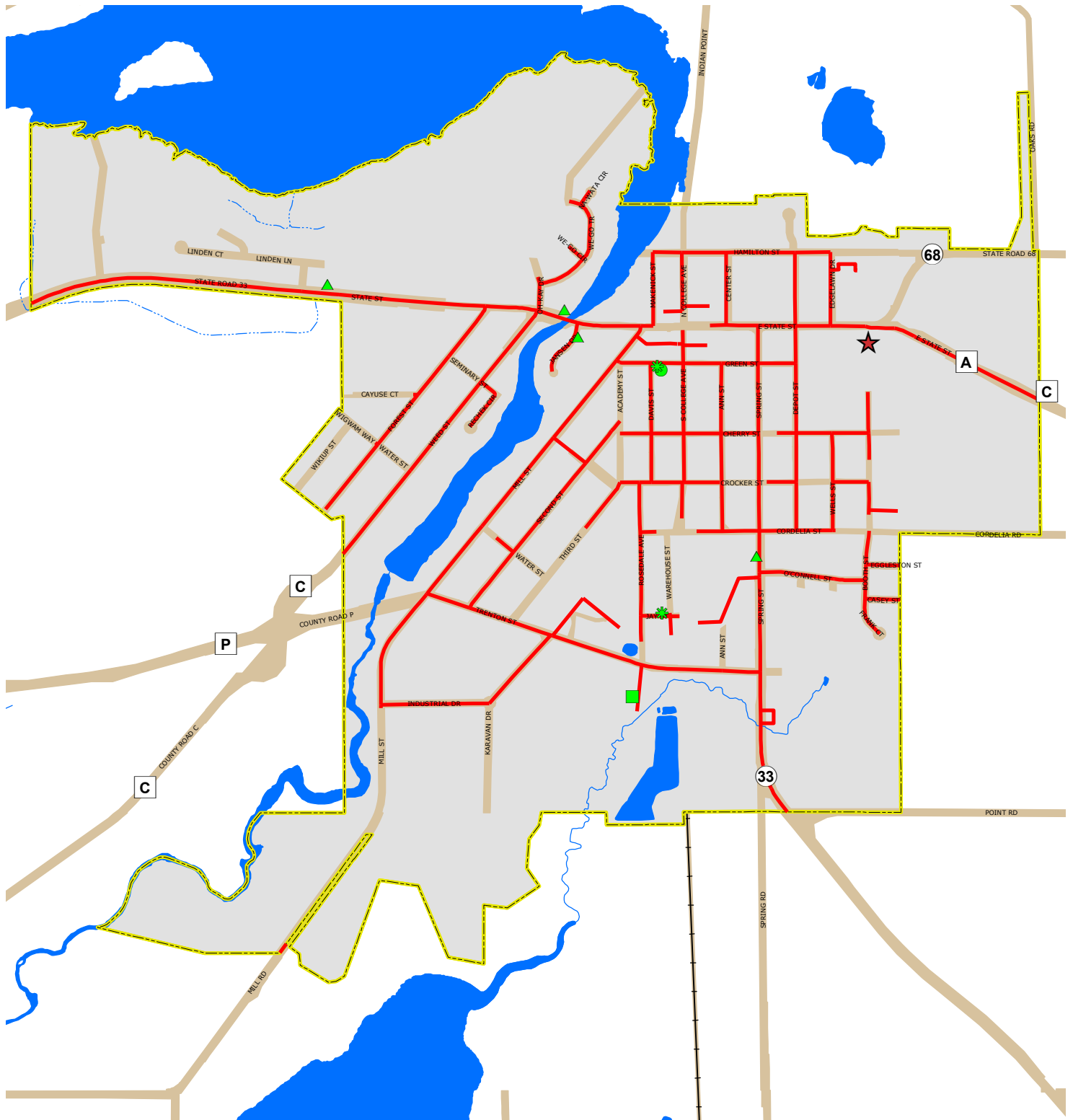
Source: Dodge County Land Resources and Parks Department, January 2012



Map 4-4, Public Recreation Facilities City of Fox Lake, Dodge County, Wisconsin

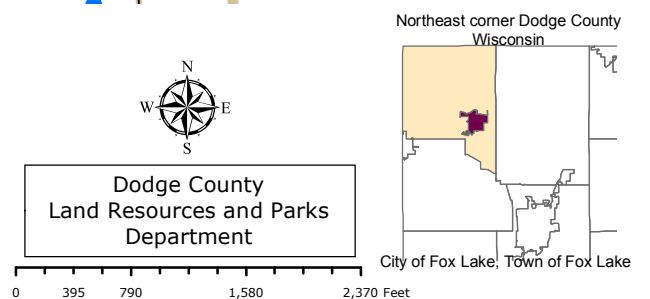


Map 4-5, Public Utilities City of Fox Lake, Dodge County, Wisconsin

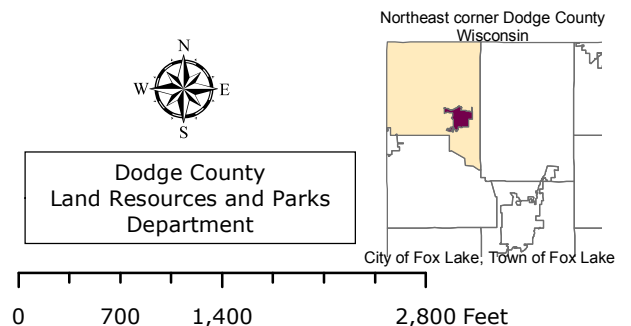
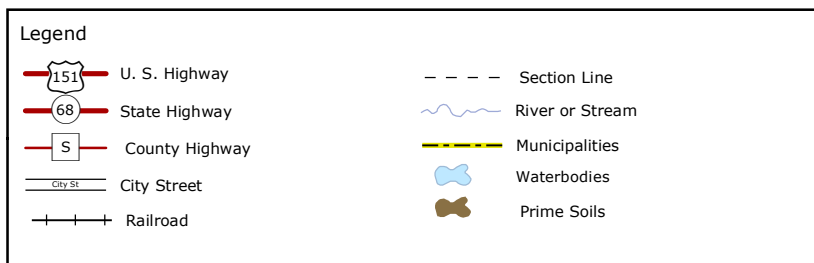


Legend	
	Road & Railroad Right-of-Way
	Railroad
	River or Stream
	Intermittent Stream
	Waterbody
	Municipality
	Natural Gas Line
	City Hall
	Main Sewage Lift Station
	Water Tower
	Lift Station
	Well

Source: Dodge County Land Resources and Parks Department, January 2012

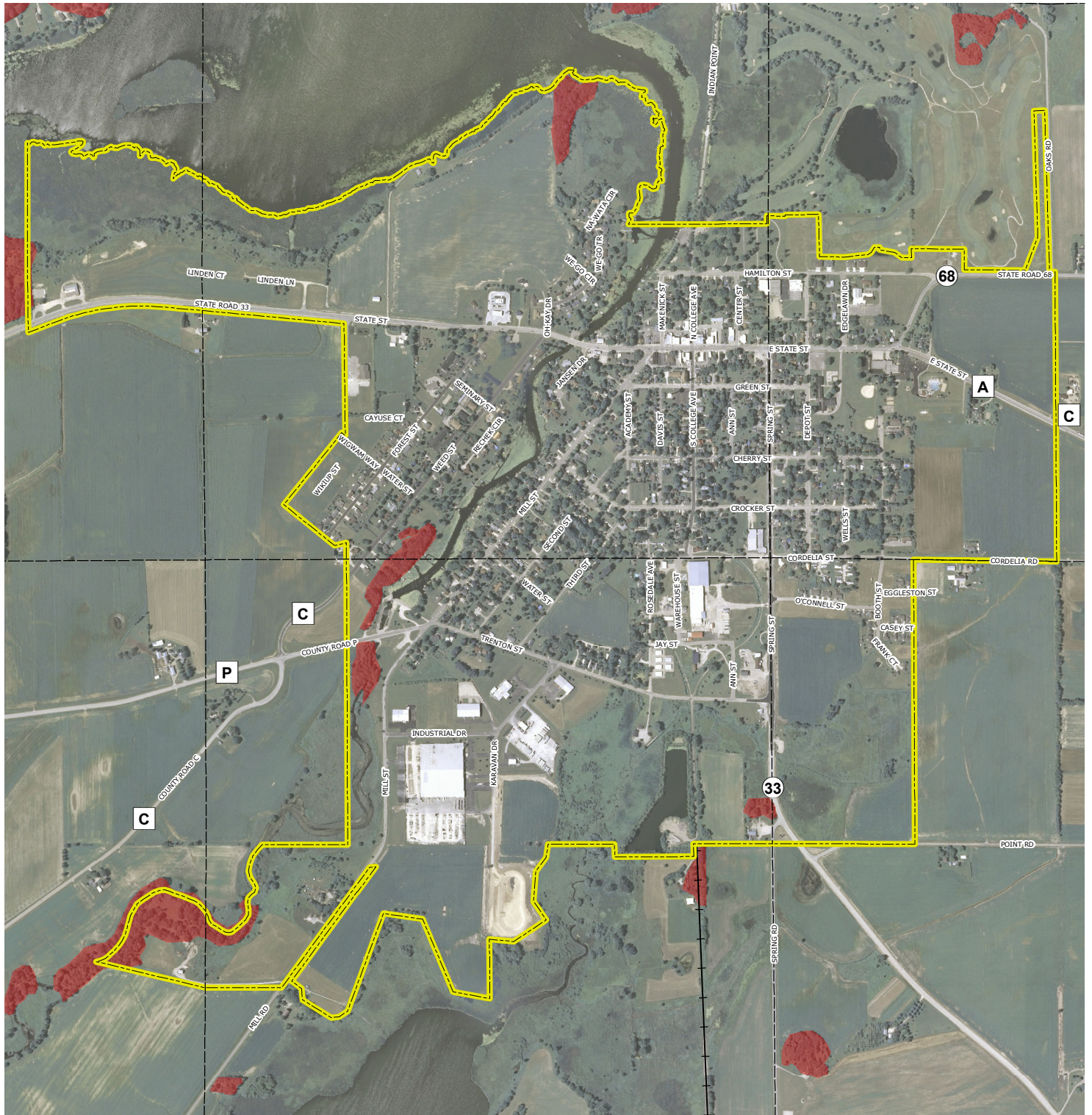


Map 5-1, Prime Agricultural Soils City of Fox Lake, Dodge County, Wisconsin



Source: Dodge County Land Resources and Parks Department, January 2012
Derived from US Department of Agriculture, Soil Conservation Service files, August 1998

Map 5-2, Woodlots City of Fox Lake, Dodge County, Wisconsin



Legend

151

U. S. Highway

68

State Highway

S

County Highway

Town Road

Railroad

City Boundary

Section Line

River or Stream

Waterbodies

Woodlots

2010 NAIP Aerial Photography

N

W

E

S

Dodge County

Land Resources and Parks

Department

Northeast corner Dodge County Wisconsin

City of Fox Lake, Town of Fox Lake

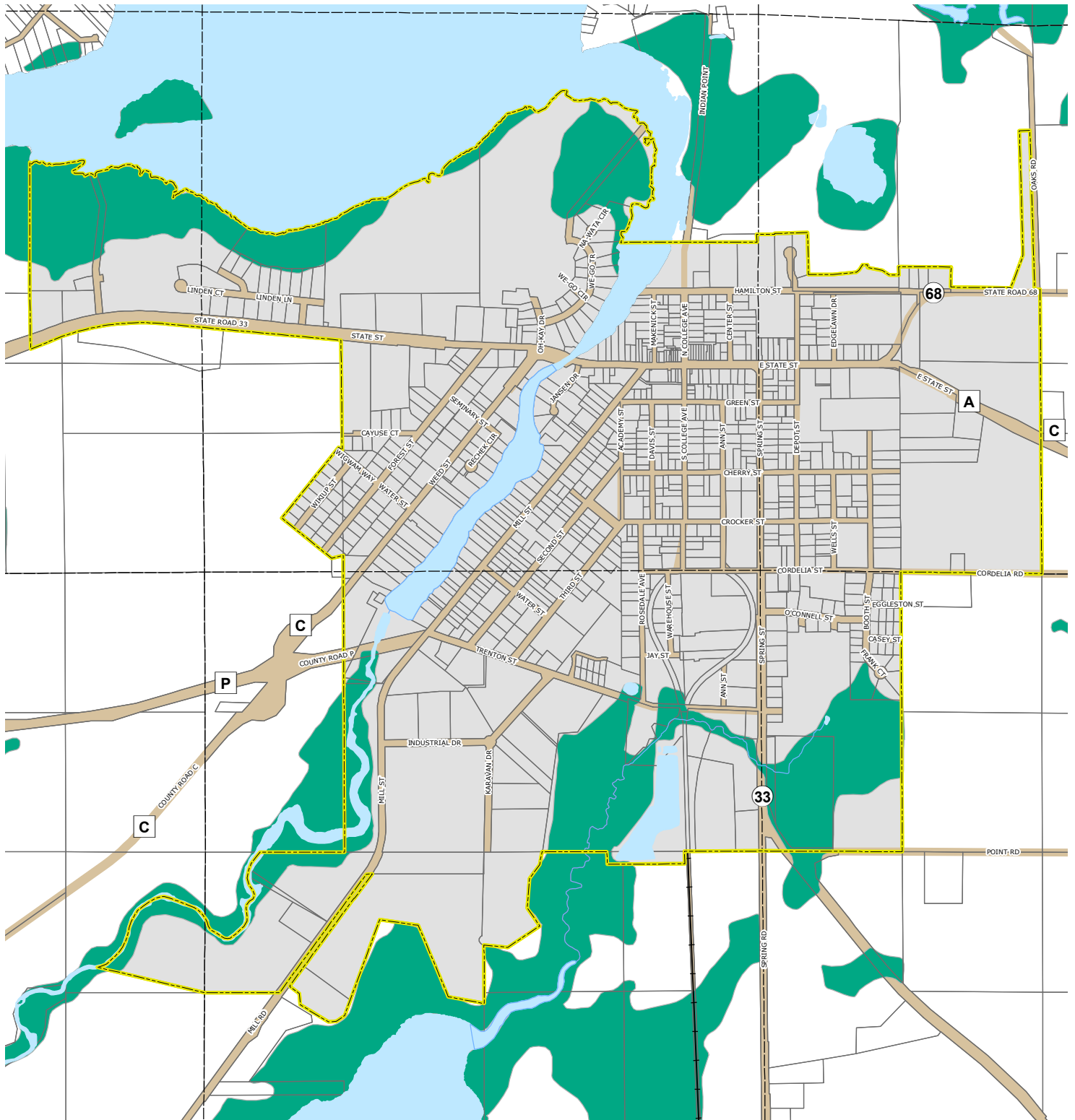
0

0.1

0.2

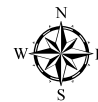
0.4 Miles

Map 5-3, Wetlands City of Fox Lake, Dodge County, Wisconsin



Legend

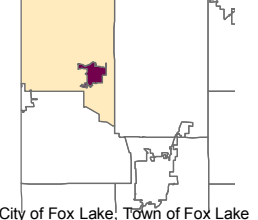
- City Boundary
- Wetlands
- Railroad
- Road & Railroad Right-of-Way
- Section Line
- Waterbody
- Tax Parcel Boundary
- Municipality
- River or Stream



Dodge County
Land Resources and Parks
Department

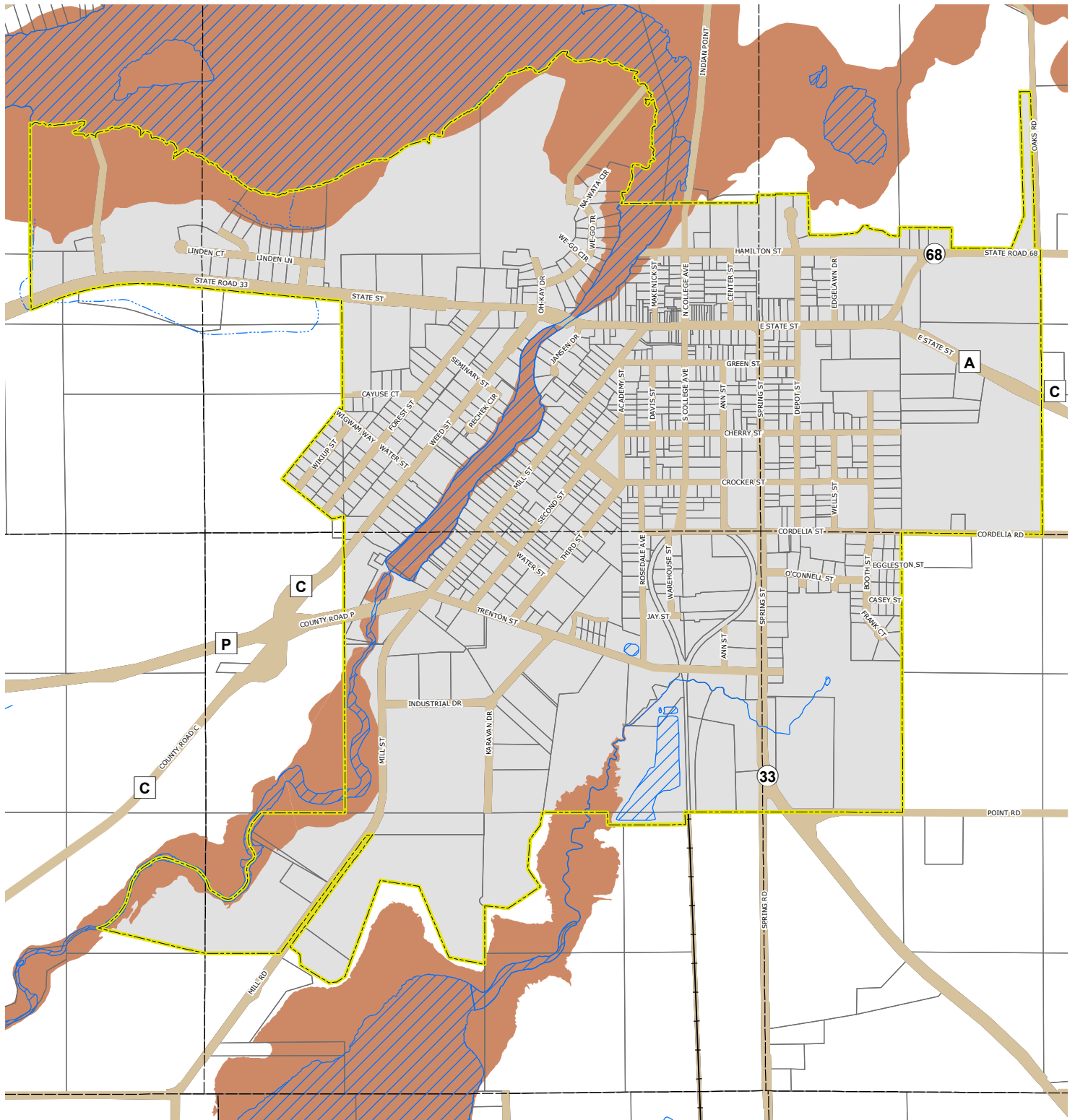
0 305 610 1,220 1,830 2,440 Feet

Northeast corner Dodge County
Wisconsin



Source: Dodge County Land Resources and Parks Department, January 2012
DNR 2006 Wetlands Inventory

Map 5-4, Floodplains City of Fox Lake, Dodge County, Wisconsin



Legend

- City Boundary
- Railroad
- Section Line
- Tax Parcel Boundary
- River or Stream
- Intermittent Stream

- Floodplains
- Road & Railroad Right-of-Way
- Waterbody
- Municipality

Source: Dodge County Land Resources and Parks Department, January 2012
FEMA Flood Insurance Rate Map April 2010

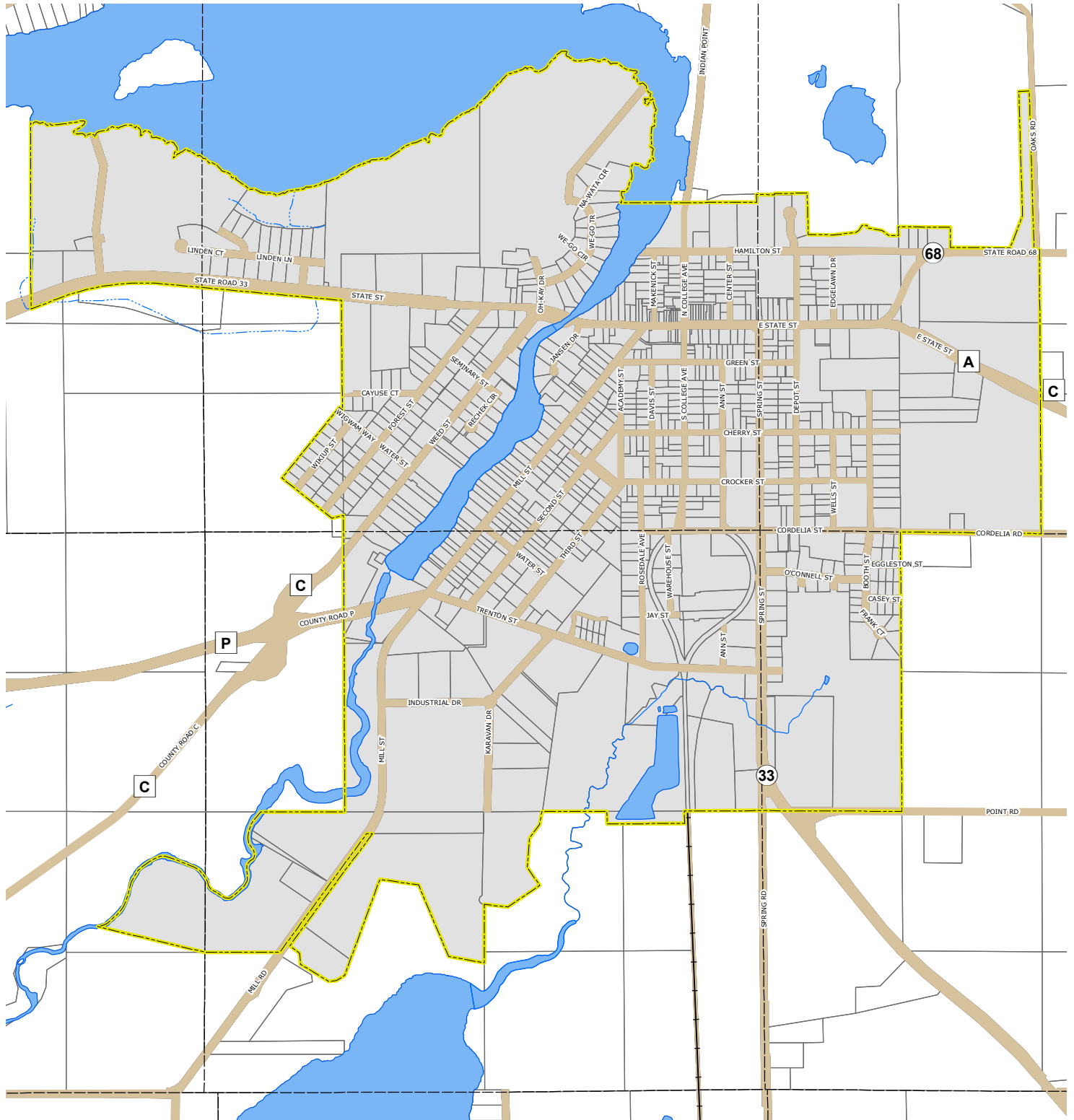
Dodge County
Land Resources and Parks
Department

Northeast corner Dodge County
Wisconsin

City of Fox Lake, Town of Fox Lake

0 395 790 1,580 2,370 Feet

Map 5-5, Streams and Surface Water City of Fox Lake, Dodge County, Wisconsin



Legend

- City Boundary
- Road & Railroad Right-of-Way
- Railroad
- Waterbody
- Section Line
- Municipality
- Tax Parcel Boundary
- River or Stream
- Intermittent Stream

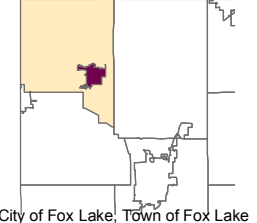
Source: Dodge County Land Resources and Parks Department, January 2012



Dodge County
Land Resources and Parks
Department

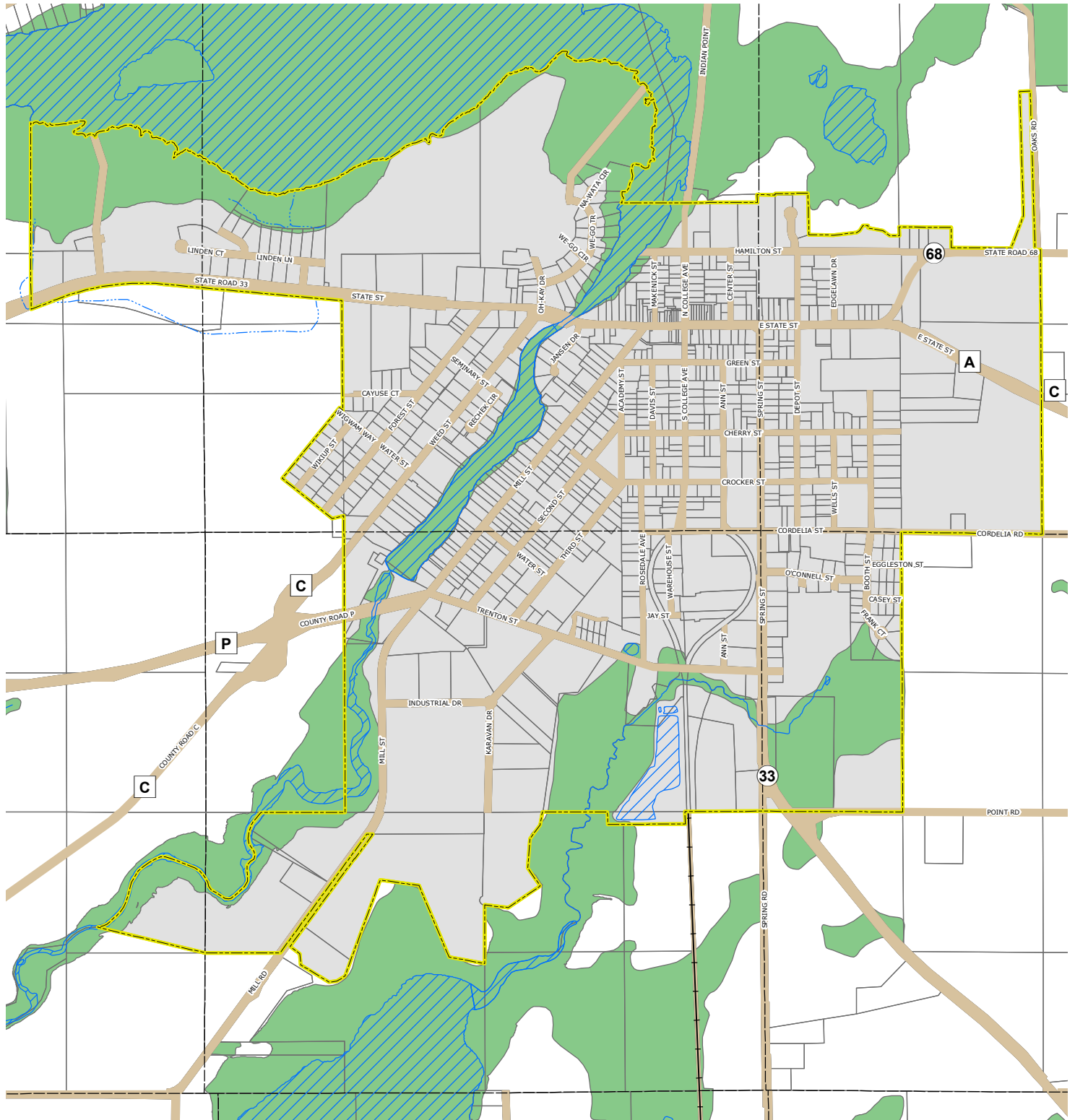
0 395 790 1,580 2,370 Feet

Northeast corner Dodge County
Wisconsin



City of Fox Lake, Town of Fox Lake

Map 5-6, Environmental Corridors City of Fox Lake, Dodge County, Wisconsin



Legend

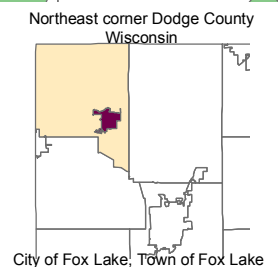
- City Boundary
- Railroad
- Section Line
- Tax Parcel Boundary
- River or Stream
- Intermittent Stream
- Environmental Corridors
- Road & Railroad Right-of-Way
- Waterbody
- Municipality

Source: Dodge County Land Resources and Parks Department, January 2012

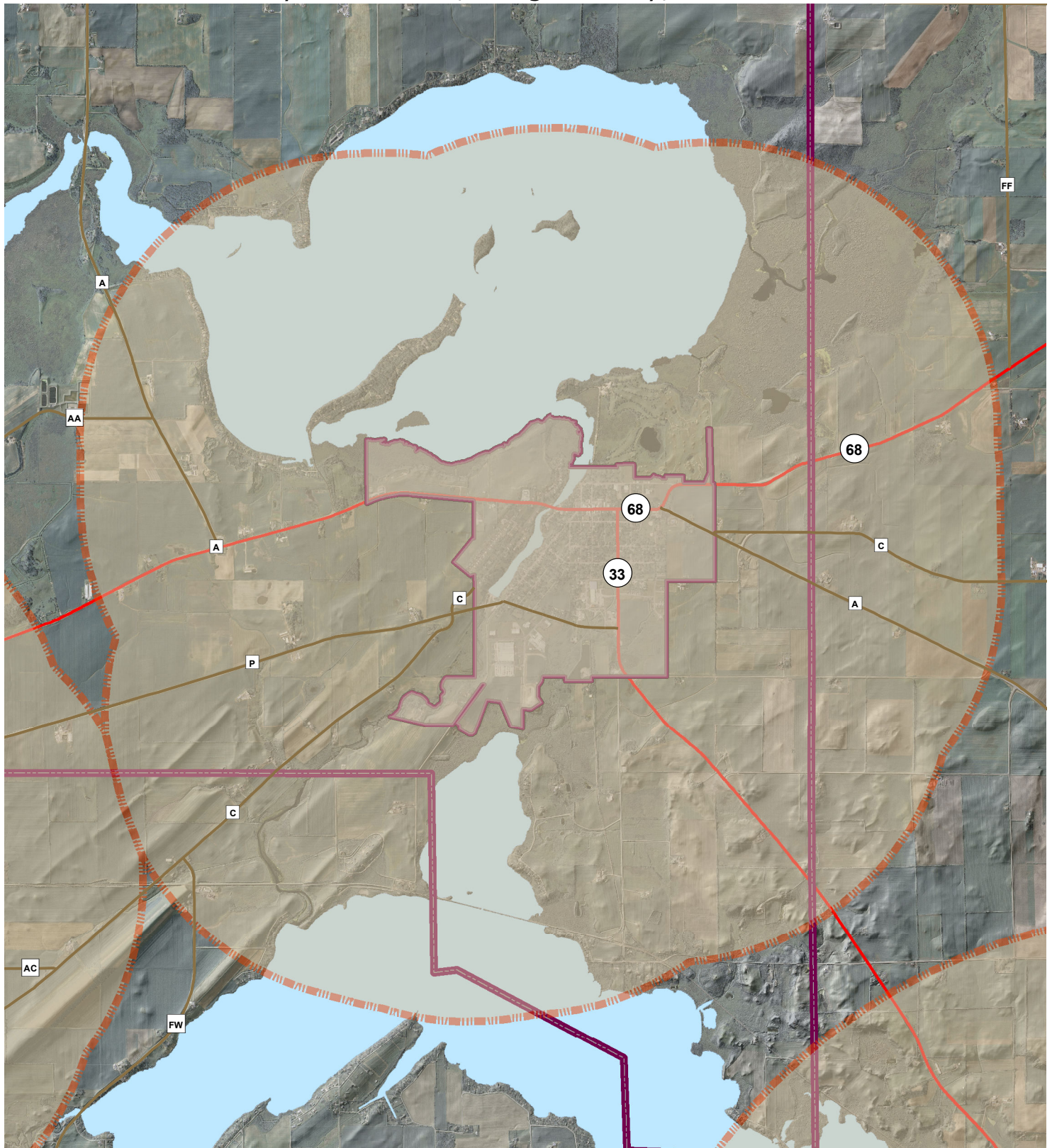
N
W E
S

**Dodge County
Land Resources and Parks
Department**

0 395 790 1,580 2,370 Feet



Map 7-1, Extraterritorial Jurisdiction City of Fox Lake, Dodge County, Wisconsin



Legend

- | | |
|----------------|--|
| U.S. Highway | Town Boundaries |
| State Highway | City of Fox Lake |
| County Highway | Extraterritorial Jurisdiction Boundary |
| | Lake |



Dodge County
Land Resources and Parks
Department



0 0.35 0.7 1.4 Miles

Source: Dodge County Land Resources and Parks Department, March 2012

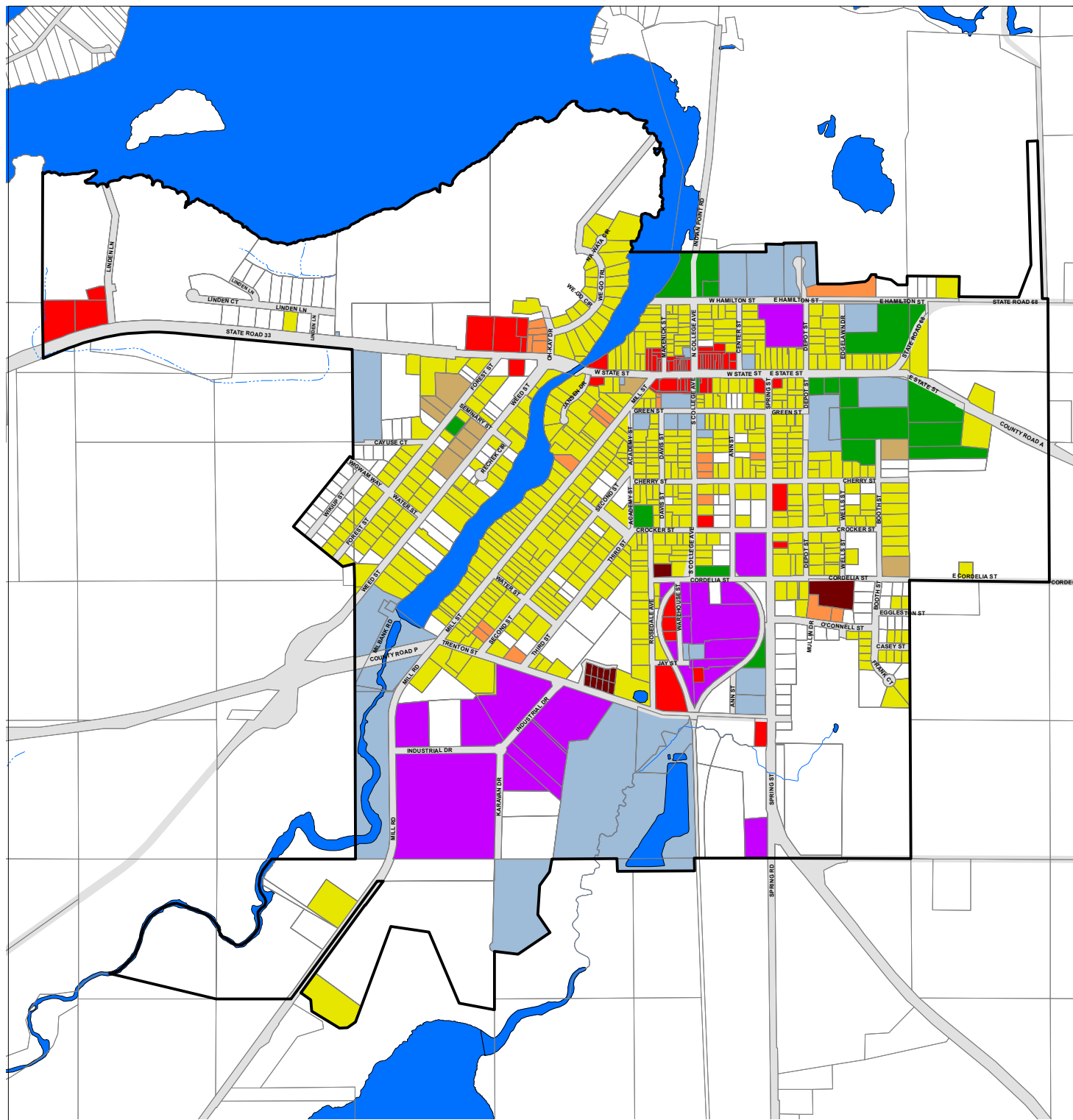
City of Fox Lake

Existing Land Use, 2011

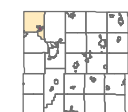
Map 8-1

Legend

- +— Railroad
- ▭ City Fox Lake Boundary
- ▭ Tax Parcel Boundary
- Land Use**
- Single Family Residential
- Two Family Residential
- Multi-Family Residential
- Mobile Home Park
- Commercial
- Industrial
- Public & Quasi-Public
- Transportation - Right-of-Way
- Parks & Recreation
- Waterway
- Vacant



Dodge County, Wisconsin

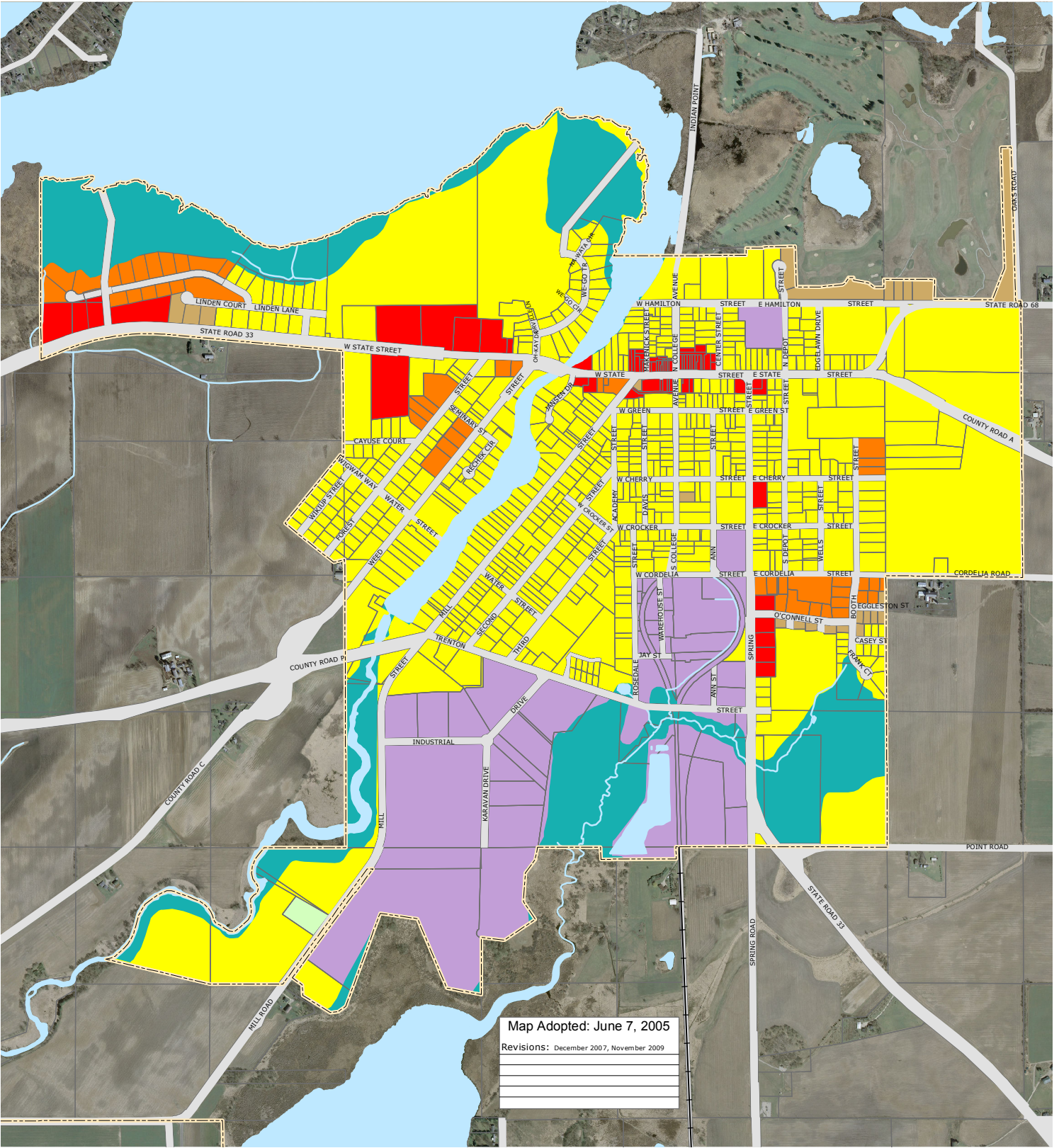


City of Fox Lake, Town of Fox Lake

340 170 0 340 680 1,020 Feet

Map 9-1 Zoning Map


City of Fox Lake, Dodge County, Wisconsin



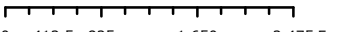
Map Adopted: June 7, 2005
 Revisions: December 2007, November 2009

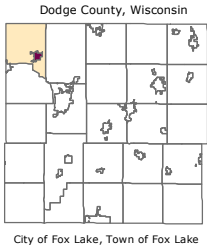
Symbols		Zoning	
	City Boundary		R-1 One-Family Residence
	Railroad		R-2 Two-Family Residence
	Tax Parcel Boundary		R-3 Multi-Family Residence
	River and Stream		B-1 General Business
			I-1 Light Industrial
			C-1 Conservancy
			A-1 Agricultural
			Road Right-of-Way
			Waterbody

Source: Dodge County Land Resources and Parks Department. Created: March 2005
 2006 Aerial Photography. Updated March 2012



Dodge County
Land Resources and Parks
Department





City of Fox Lake, Town of Fox Lake